

# RadExPro 2014.3 описание релиза

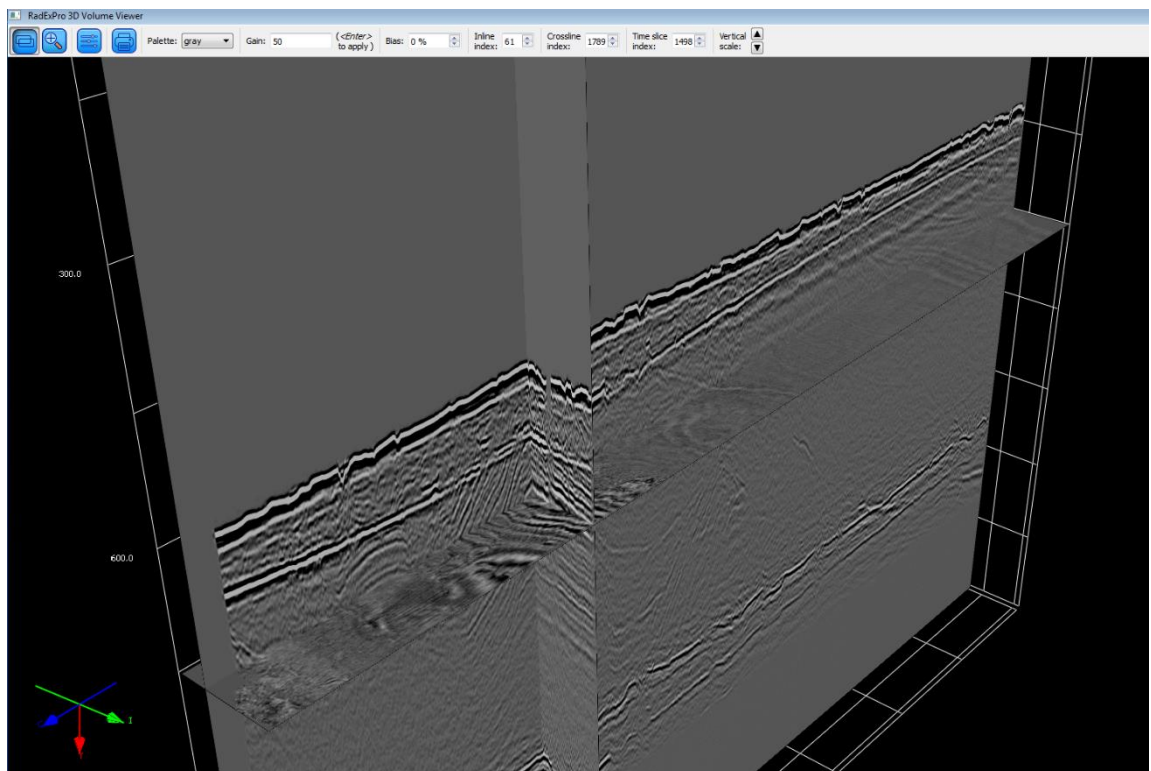
We are excited to announce a major update of our seismic software – **RadExPro 2014.3**.

Main upgrades are as following:

- Synchronization of several **Screen Display** windows and display of several spectra curves on one window. Compare processing results in RadExPro is as easy now as it has never been before! Here you can get a feeling of how it works: <http://www.youtube.com/watch?v=7L2zdRgafao> Besides, an option to display non-normalized spectra in their true amplitudes was added.
- New convenient modes of horizon picking were added to the **Screen Display** functionality: in the **Draw** mode simply hold left mouse button pressed to draw the pick on the screen. **Draw along phase** mode works nearly the same but the pick snaps to the selected phase (maximum, minimum, or zero-crossing) within a specified windows around the cursor.

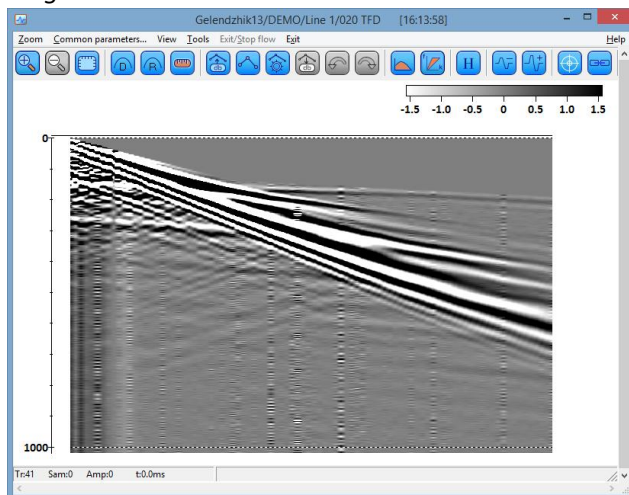
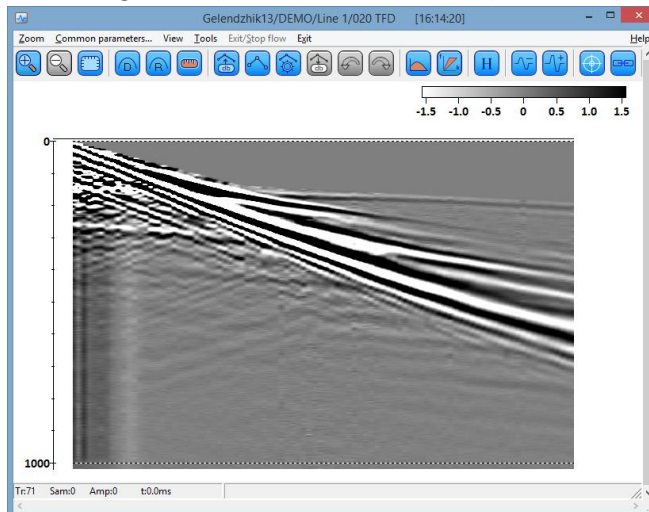
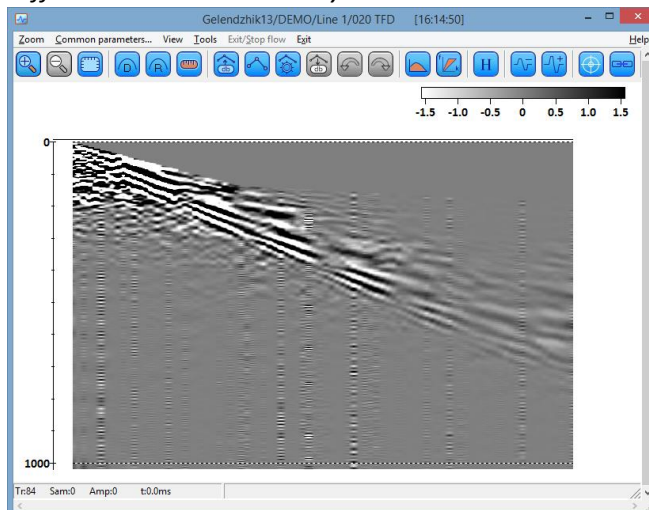
**Eraser** mode now is activated temporarily by holding **E** key. When you release the key, the picking will get back the mode previously used.

- Brand new **3D Volume Viewer** module was added for visualization of 3D cubes.



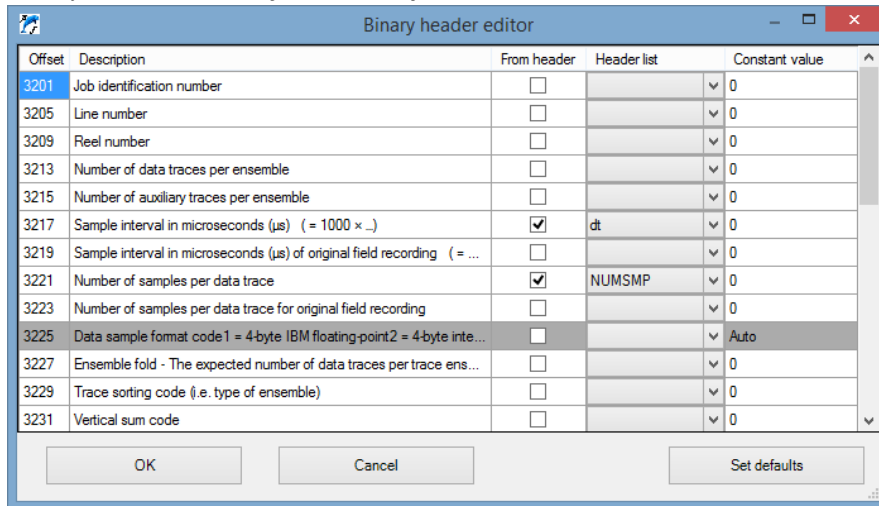
(P-Cable 3D data courtesy of University of Tromsø)

- Here is the easy way to calculate difference between the original data and the processing result: a new **Dataset Math** input either trace-to-trace difference or sum of two datasets into the flow.

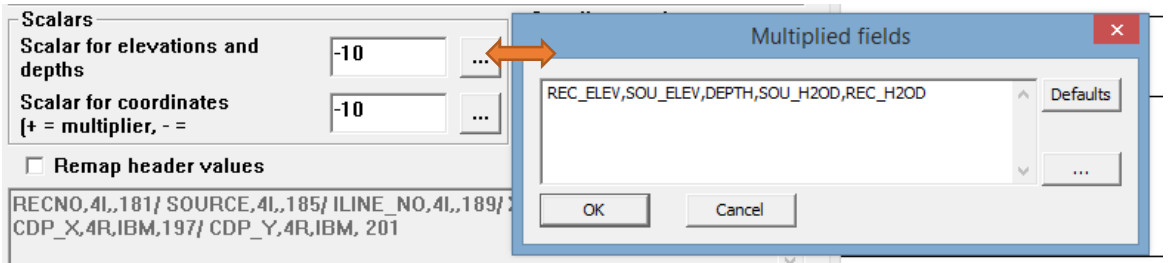
*Original data:**Processing result (TFD Noise Attenuation):**Difference between them by Dataset Math:*

- The **SEG-Y Output** module was upgraded significantly. Now you can edit file binary header, as well as modify lists of headers affected by coordinate and elevation scalars. EBSCDIC text editor was updated – now it warns which lines are going to be truncated.

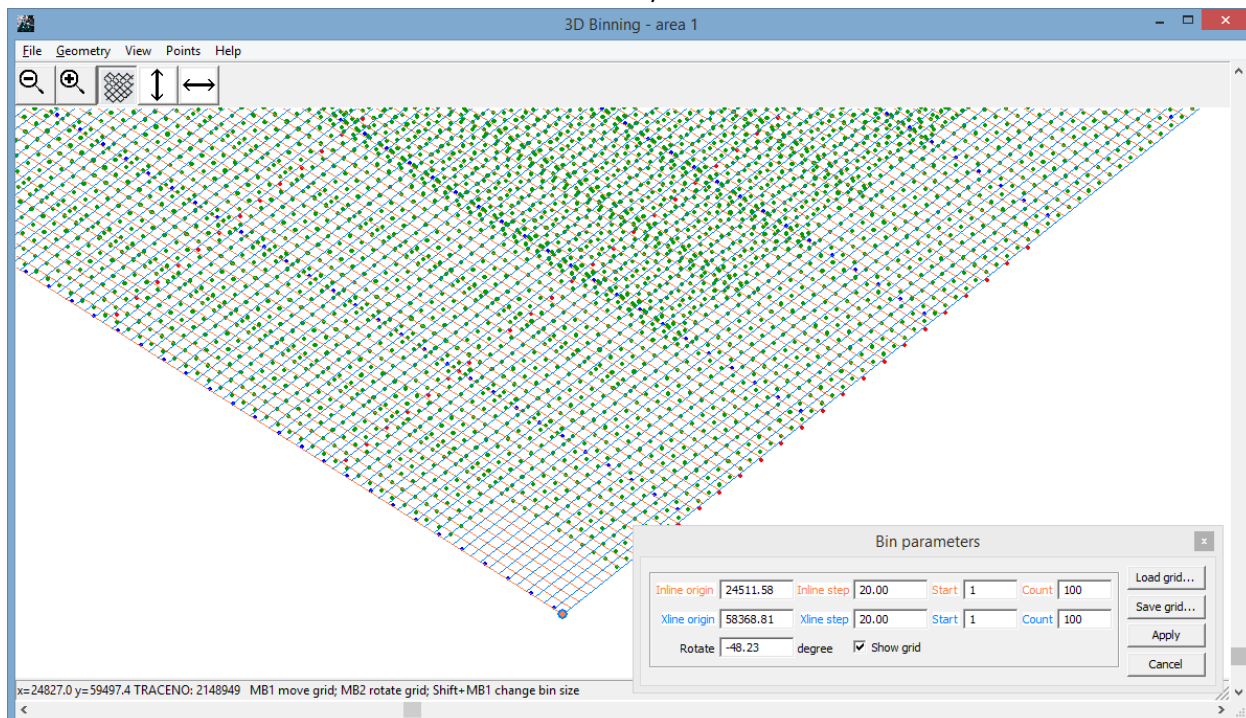
*Binary header editor of **SEG-Y Output**:*



*Editor of the list of header fields to be affected by elevations scalar:*

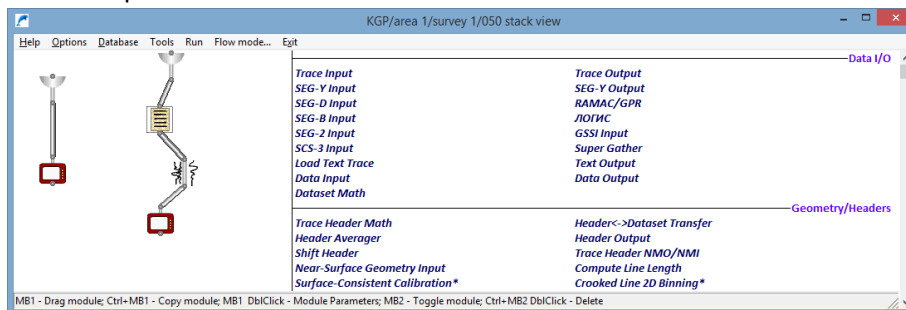


- It is much easier now to use the updated **3D Binning** tool – the inline and cross-line directions of the grid are now drawn in different colors (inlines – orange, cross-lines – blue). The coordinate origin is marked by a circle. When manual editing of the grid is off, you can pan the whole canvas with the left mouse button. You can also zoom/unzoom now with the mouse wheel.



Some smaller improvements, still making life easier:

- Now you can **Load Headers Only** into the flow using the appropriate flag in the **Trace Input** module. This saves time when you load big data volumes into a flow that process headers and does not affect the data itself (e.g. when you calculate fold and offset sampling).
- Now you can export headers of each file/dataset in the **Batch mode** to a separate ASCII file – the **Header Output** module supports the batch mode now.
- Index of currently processed input file/dataset in the batch mode is now passed into the flow through the BATCH\_IND header field, so you can process it inside the flow.
- Now you can make non-connected processing branches in the graphic mode of flow editor. When executed, they will be run in parallel. When you exit the flow and enter again, the branches persist.



- Incorrect font size when exporting images/printing from the **CrossPlot** module is now fixed.

And the last but not the least: we have updated the “User manual”. The document revised on 03.10.2014, describing all functionality that have been added to the software during the last year is included into the update installation and available for download from our web site (from the Download/User Manuals page).

Additionally, we have recently added 2 new tutorials: on computing of QC attributes, fold and offset sampling, and on making QC maps. They are available from our web site from the Download/Tutorials page.

As usual, we encourage our customers with active maintenance to contact us at [support@radexpro.ru](mailto:support@radexpro.ru) and receive the update free.