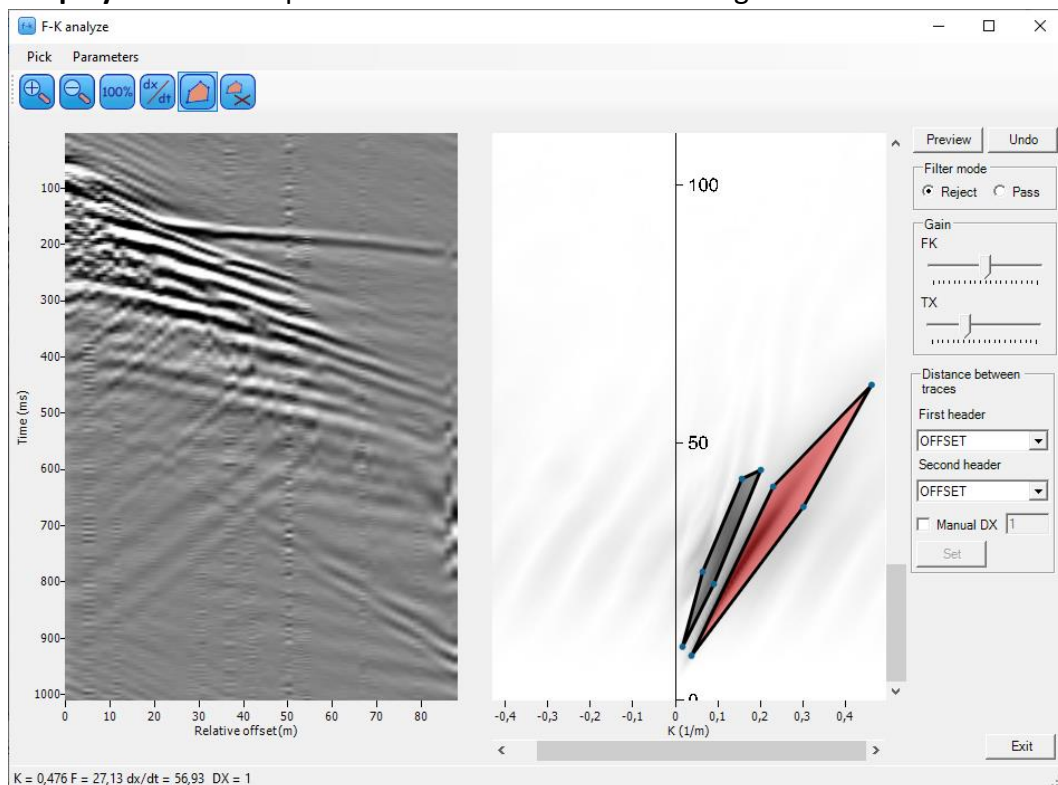


RadExPro 2019.2 release notes

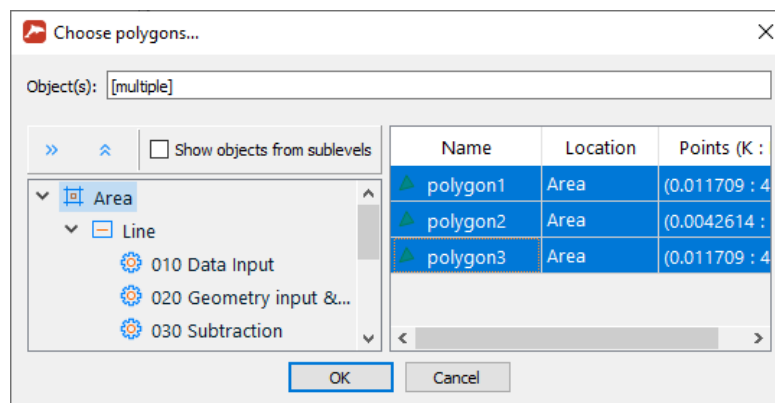
We are most pleased to let you know that the next version of our software is now ready:

RadExPro 2019.2

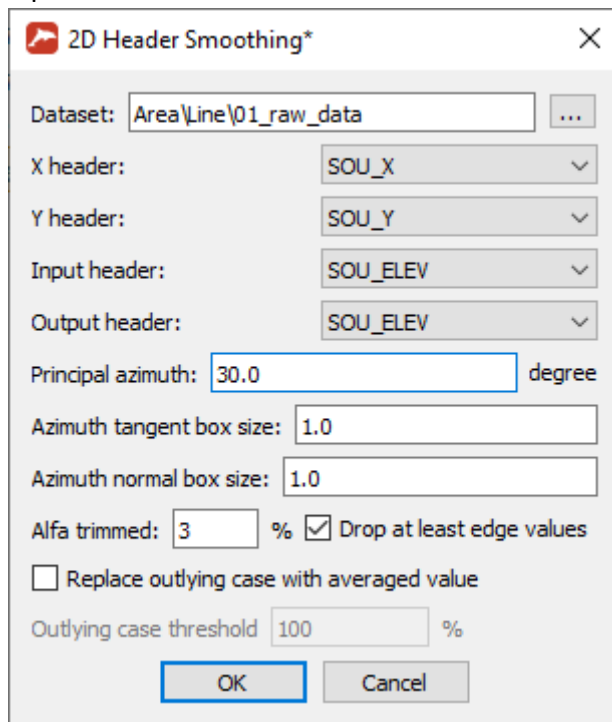
- Now you can create/load more than one polygon in the **F-K Analyze** tool of the **Screen Display** module and preview their simultaneous filtering result.



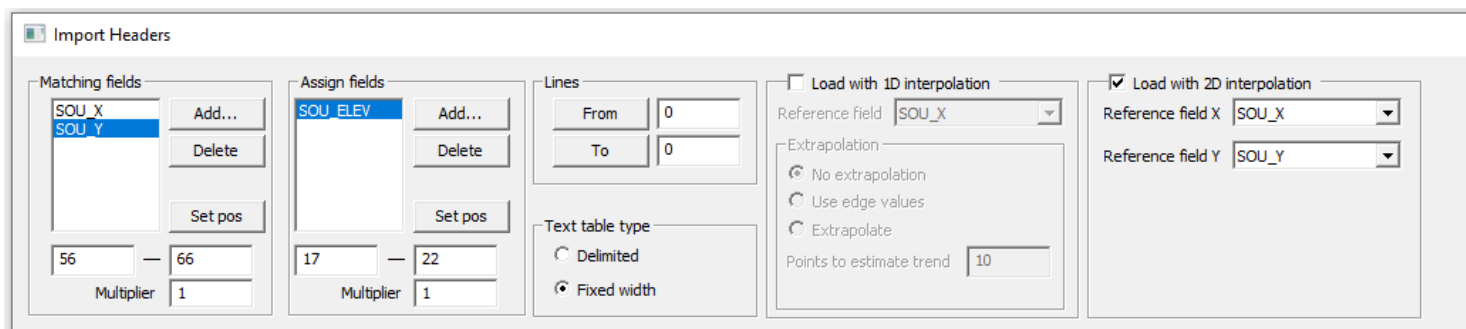
- F-K Filter** module was modified as well. Now it allows multi-select when the polygons are added or deleted.



- A brand new **2D Header Smoothing** module was implemented to average header values in 2D coordinate space. It performs weighted averaging throughout a box of specified sizes that can be rotated relative to the coordinate system.



- **Geometry Spreadsheet** when importing from an ASCII-file can now load header with 2D coordinate interpolation. For instance, if your topography is defined as a grid with X and Y coordinates, this is the way how you can project it to source or receiver locations.



- Now you can specify a window with no filtering in the **Time Variant Bandpass Filtering** module. For that, set **Window usage** parameter corresponding to this window to 0.

Time variant bandpass filtering

Use windows

From pick:

PICK1
PICK2

Add Delete

Tapering length: % of window length

Windows overlap: ms

Filter type: Ormsby bandpass filter

Filter parameters

Window usage: 0 - no operation
1 - filter

Low-cut ramp: 0% Hz

100% Hz

High-cut ramp: 100% Hz

0% Hz

Number of threads:

OK Cancel

- SharpSeis Deghosting** module can now load ghost time delays from a dataset. The dataset must be of the same size and sorting order as the data being processed. With this option, now you can estimate and output ghost delays, process them to get rid of occasional misestimates, and then load back.

SharpSeis Deghosting

Ghost time-delay adaptation

On Minimum ghost time-delay (ms)

Maximum ghost time-delay (ms)

Time window length (ms)

Time window step (ms)

Trace window length

Trace window step

Off Ghost time-delay (ms)

Off / Load ghost time-delays from dataset:

Output ghost model only

Output estimated parameters

Ghost amplitude adaptation

On Ghost amplitude (min)

Ghost amplitude (max)

Off Ghost amplitude

Forward and reverse traces combination

Combine filtered traces

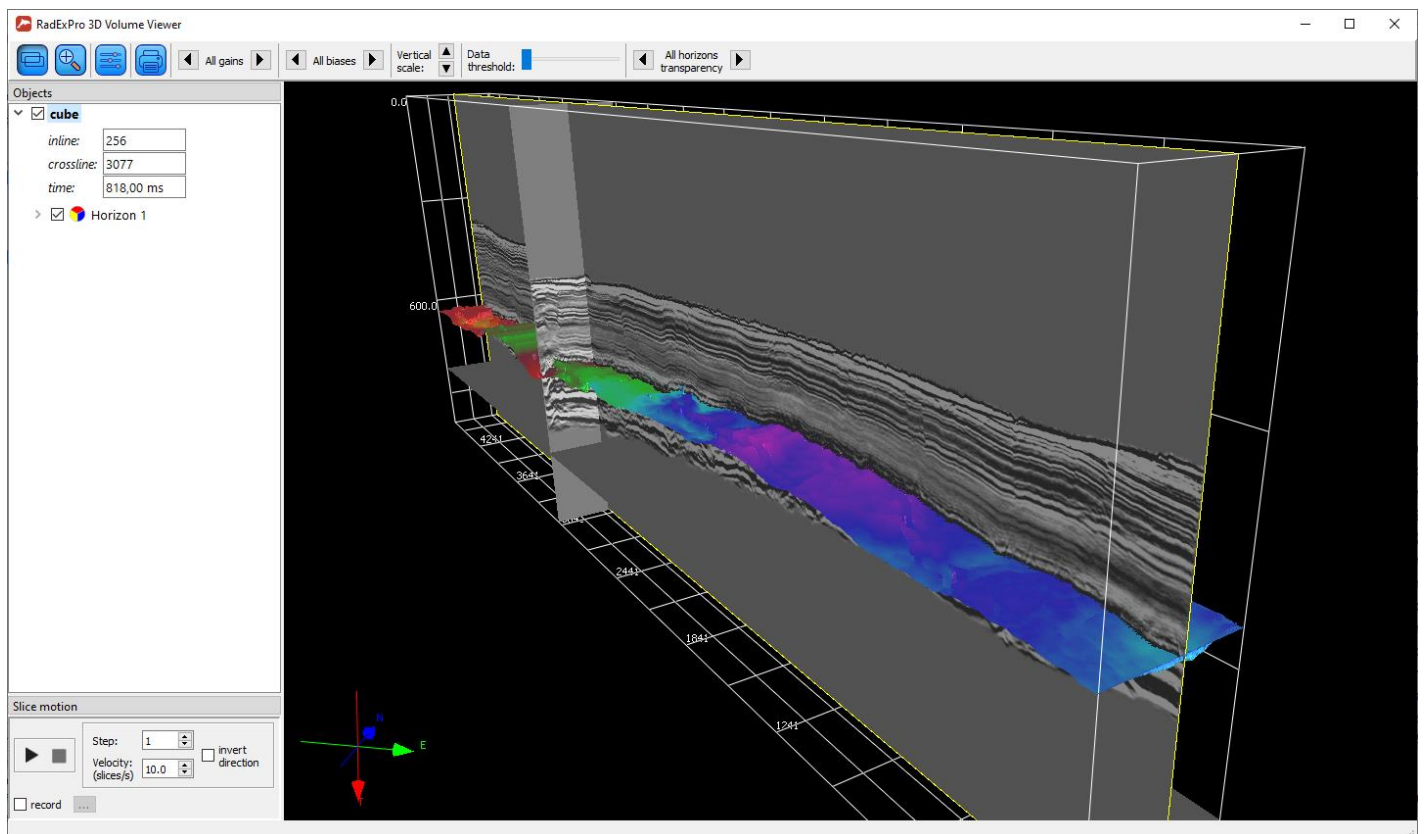
Trace combination time window length (ms)

Number of threads:

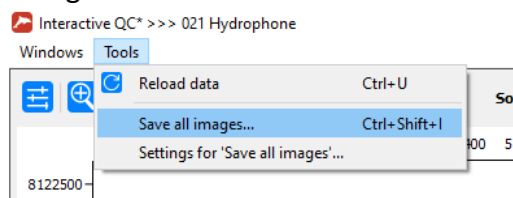
Advanced

OK Cancel

- Horizons in the **3D Volume Viewer** can now be color coded according to a user-selected header field.



- **Ensemble QC** module now supports *Trace by trace* mode when the attributes are estimated for each trace individually and are not averaged over the whole gather. In this mode, traces outside of the estimation window will get no value (an internal indicator that the header value for this trace does not exist).
- **Interactive QC** module, when a point on a map has no value of the attribute selected for color-coding, will now draw it dark gray.
- You can now save images of all maps of the **Interactive QC** module simultaneously with one single command.



- Now, **Database Navigator** allows multiple import for almost all types of objects (except for datasets, boreholes and QC-polygons).
- **Interactive Velocity Analysis** now allows multiple import of reference horizons.

- Some **bugs were fixed**:
 - When loading ghost-time delays from header SharpSeis deghosting, instead of individual values for each trace uses one delay per gather – **FIXED!**
 - Database Navigator takes long time to update the view if very large velocity tables are present in the project – **FIXED!**
 - Certain combinations of the numbers of gathers and parallel threads make Wave Field Subtraction deadlocked – **FIXED!**
 - Comment module at the beginning of a flow, unless deactivated, prevents the flow from running – **FIXED!**

As usual, if you are on maintenance, please contact us at support@radexpro.com and get your update for free.