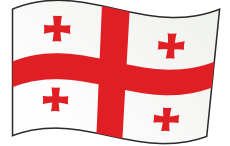


RadExPro

seismic software

from Georgia

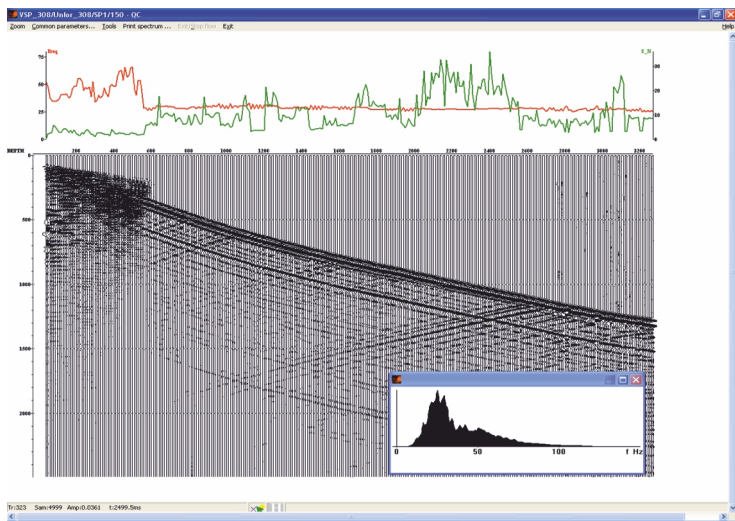


VSP Data Processing

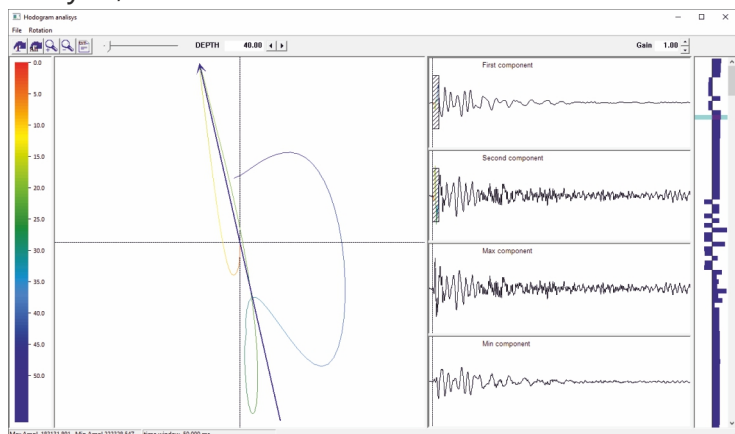
With the **RadExPro** software, you can process zero-offset, far-offset and walk-away VSP data of different types of sources.

Geometry calculation and assignment using a dedicated easy-to-use tool, properly incorporating borehole inclinations and azimuths and removing duplicated traces.

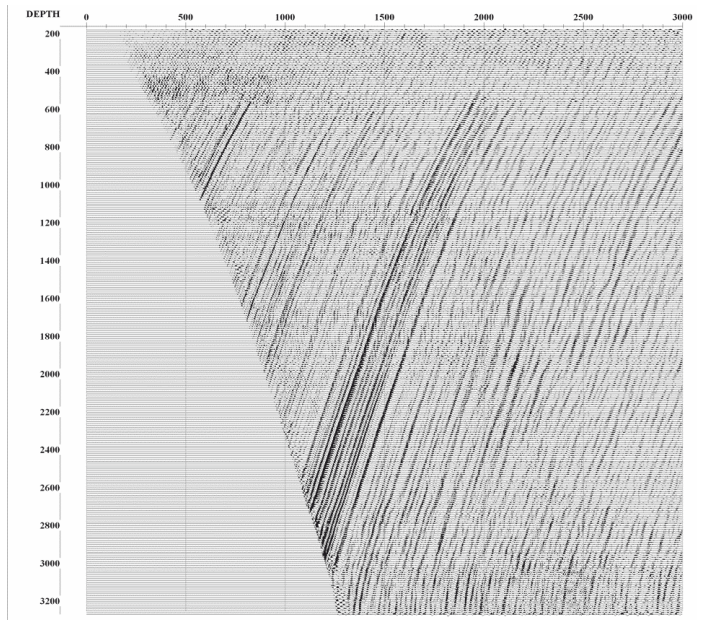
QC of raw VSP data.



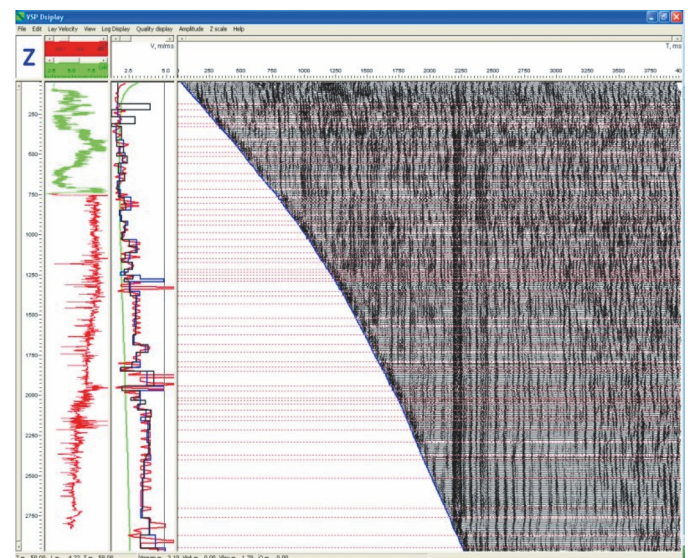
Efficient multi-component processing: hodogram analysis, 2C and 3C data rotation



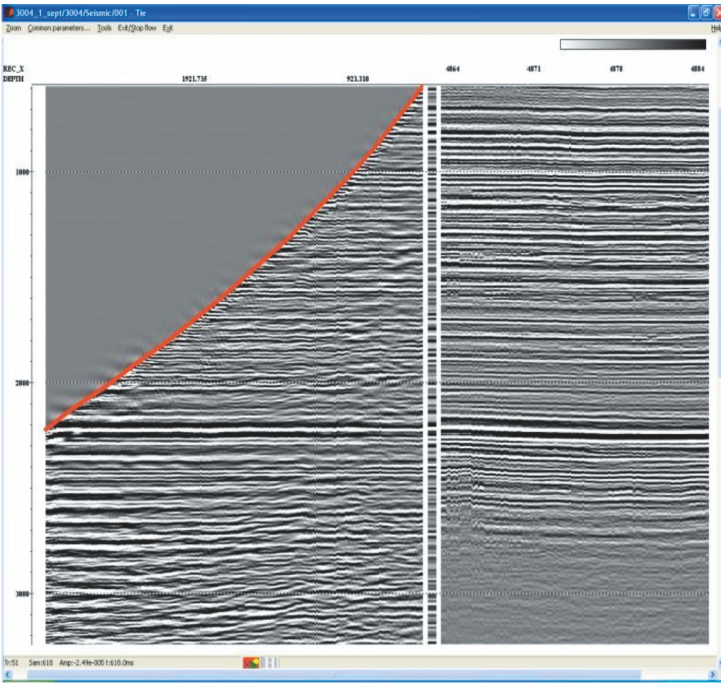
Several algorithms for efficient wave-field separation.



Convenient interactive tool for building velocity model (both for P- and S-waves).



Interactive tie of VSP and surface seismic data



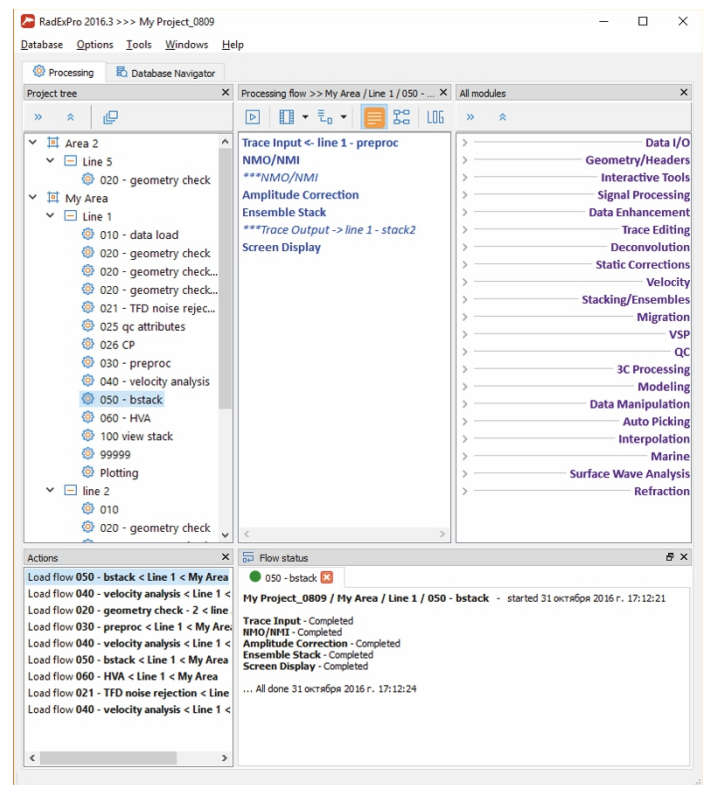
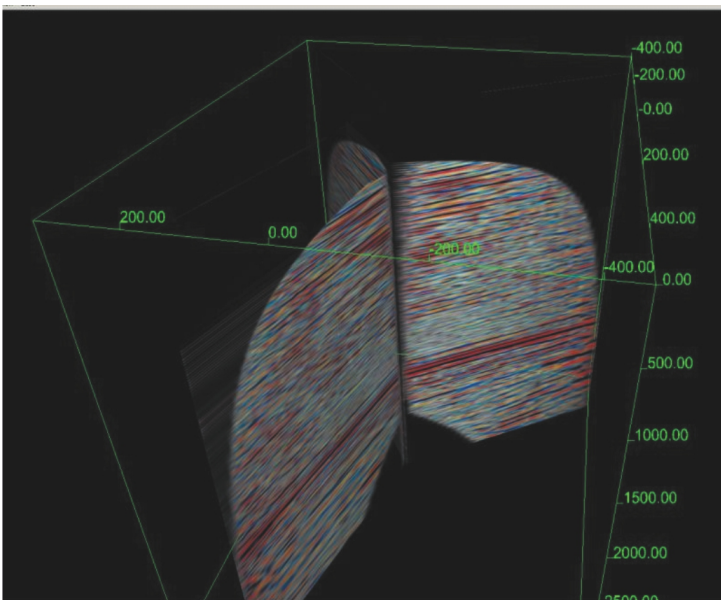
Complete set of industry-standard general processing algorithms:

- vibroseis correlation, trace editing, statics, frequency/FK/Radon filtering, denoising, deconvolutions and spectral whitening, adaptive wavefield subtraction, etc.

Handy data management tools -- processing is project based, each dataset contains processing history.

Convenient user-friendly interface – easy to learn and to use.

Migration and VSP-CDP transformation.



MINIMUM RECOMMENDED SYSTEM REQUIREMENTS

Intel Core i5 CPU

8 GB RAM

Windows 7/8/10/11 64-bit OS



RadExPro seismic software LLC
Tbilisi, GEORGIA



RadExPro Europe OÜ
Tallinn, ESTONIA



sales@radexpro.com
support@radexpro.com
www.radexpro.com
+995 557 659289