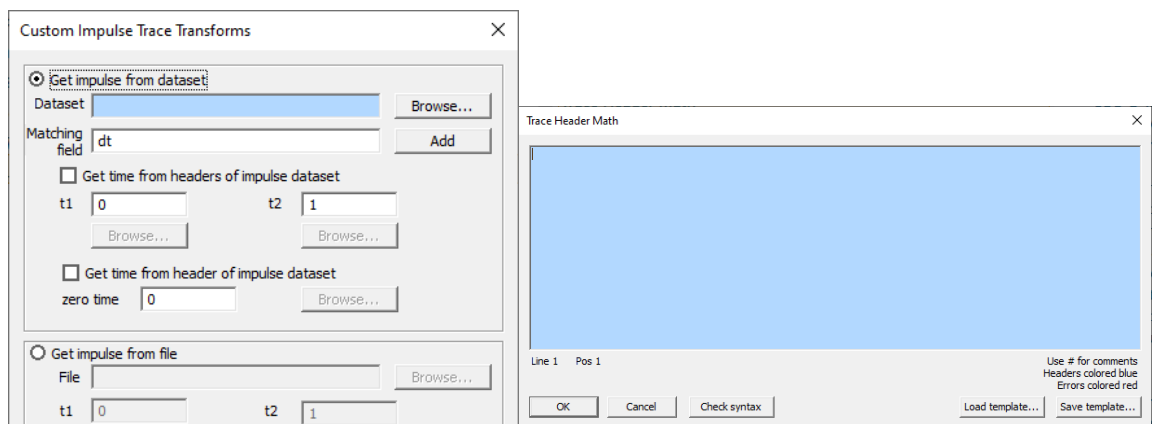


RadExPro 2021.3 release notes

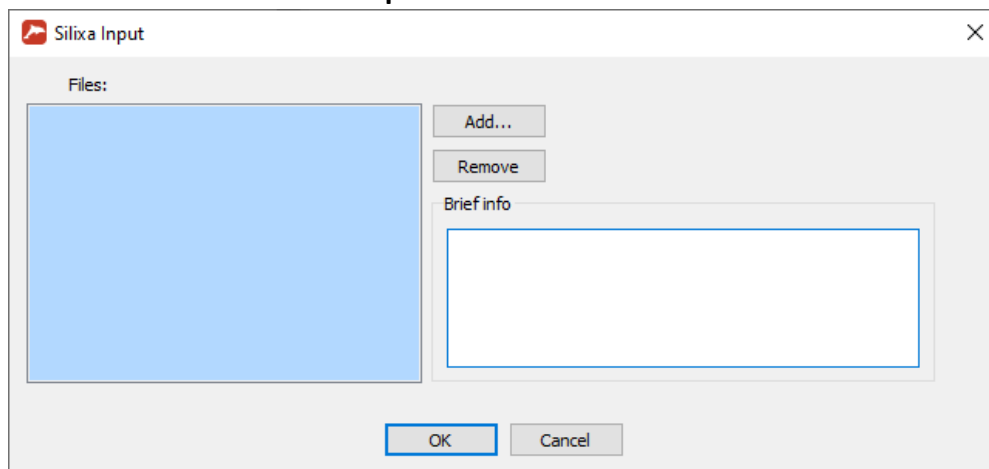
We are happy to announce that our next release is ready – **RadExPro 2021.3!**

The main novelties are as following:

- We added replica support to the following modules:
 - **Custom Impulse Trace Transforms**
 - **Trace Header NMO/NMI**
 - **Time/Depth Conversion**
- Now all edit fields with replica support are highlighted with a light blue background, so that you can easily recognize where you can use variables from replica tables. There are quite a few of them in the software already!



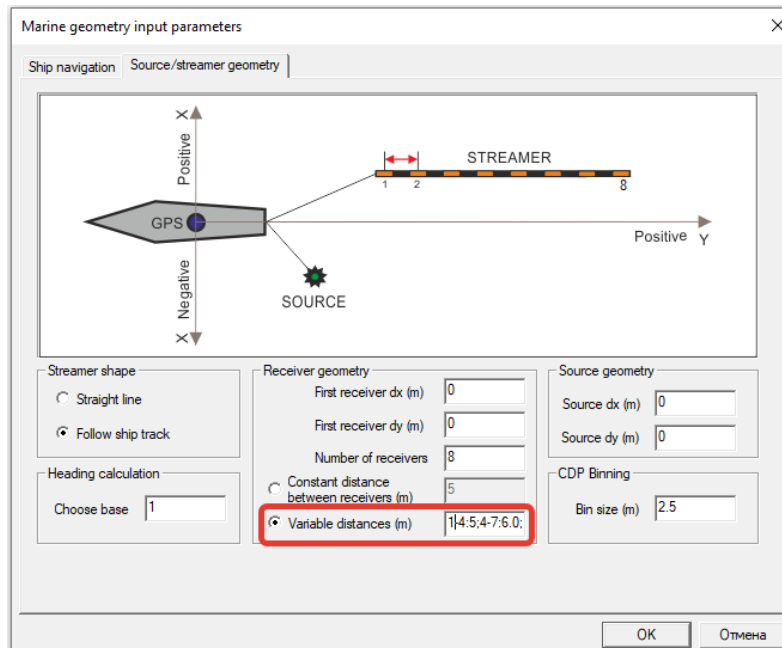
- We have added new **Silixa Input** module to read Silixa DAS data files:



- One more version of HDM5 DAT data format was supported with the new **PRODML Input** module.

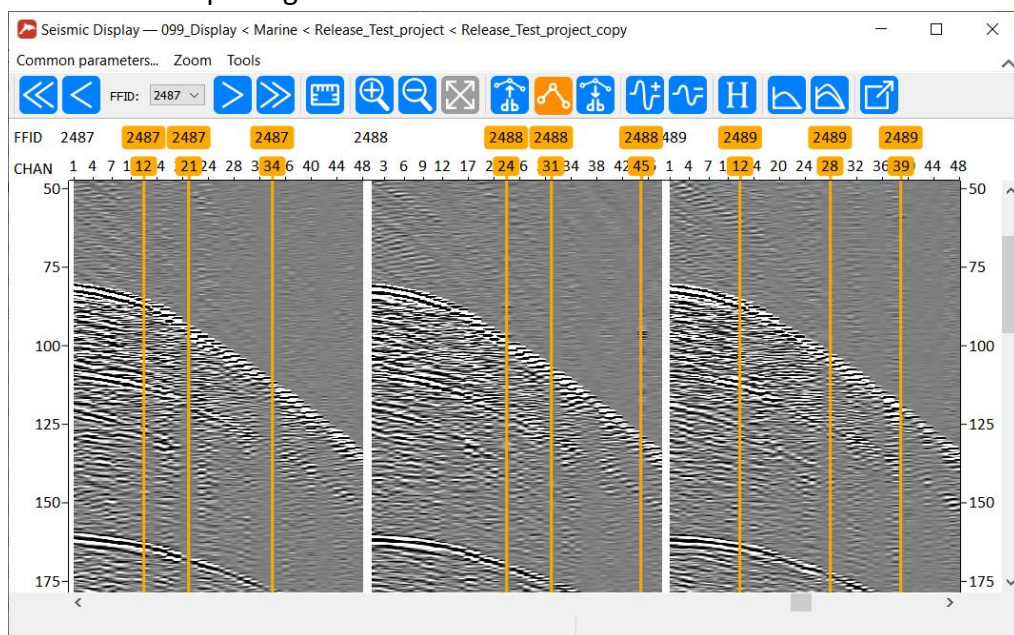


- In the **RadExPro Real-Time** configuration we have added real-time data input facility for all DAS formats supported, with the new **Real-Time Terra15 Input**, **Real-Time Fotech Input**, **Real-Time PRODML Input** and **Real-Time Silixa Input** modules.
- **Marine Geometry Input** module now supports streamers with variable channel spacing.

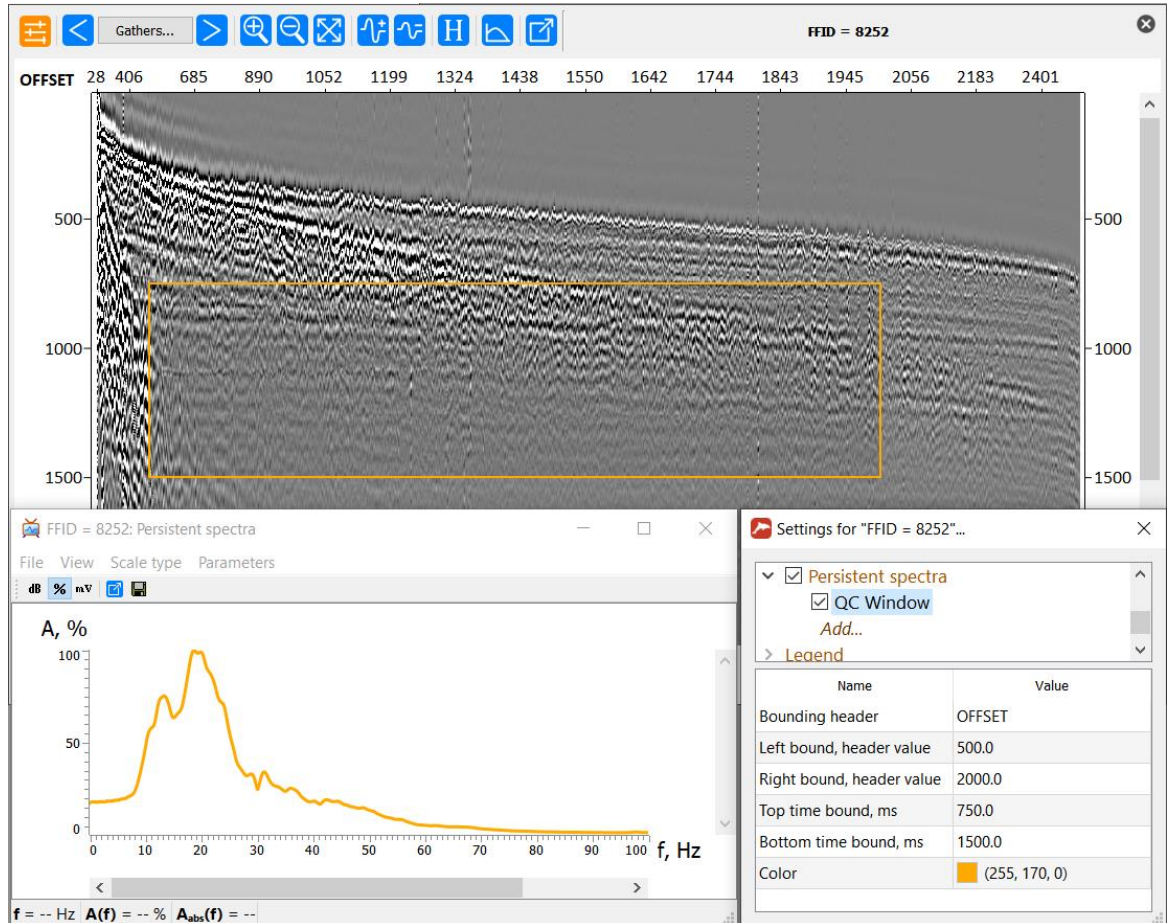


We have also added an option to the module to read ship coordinates from trace headers.

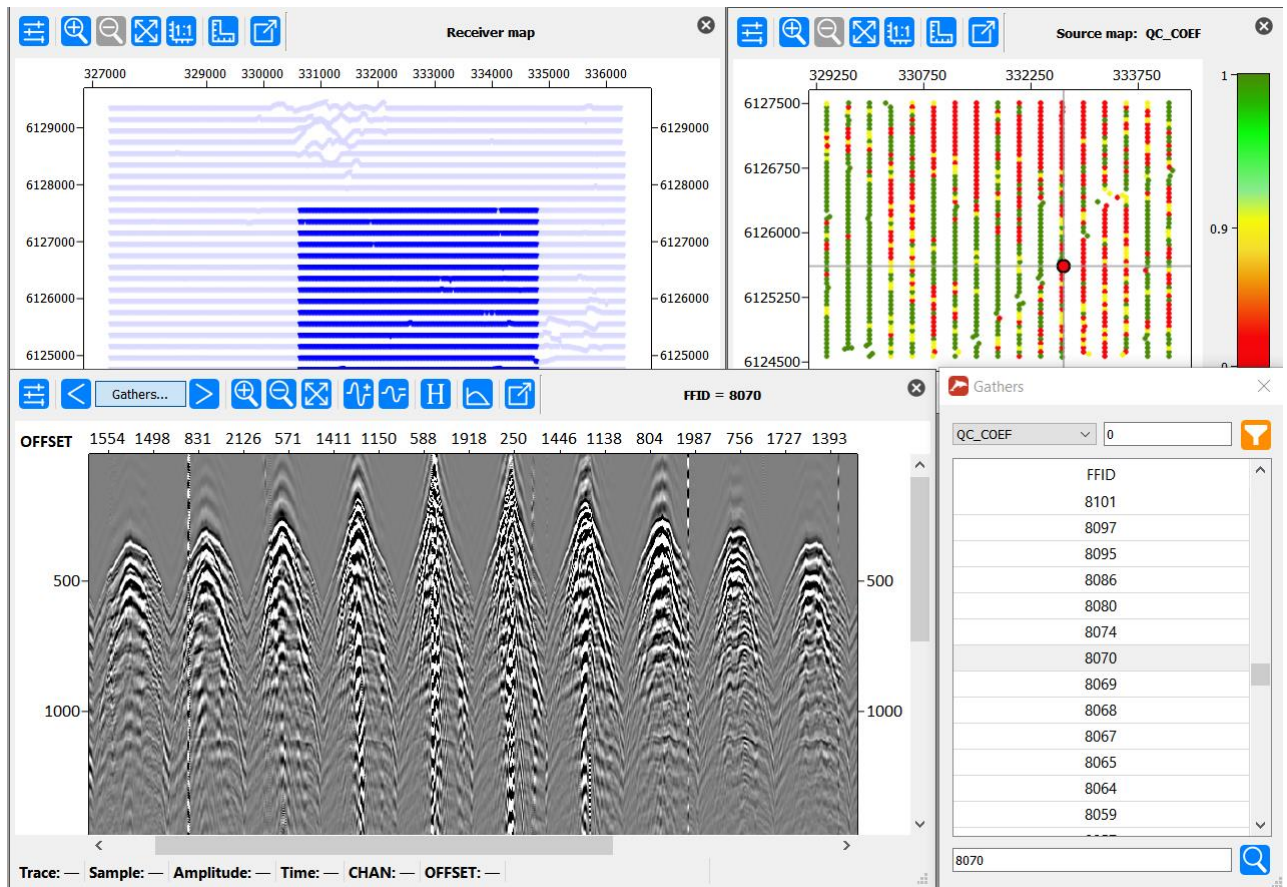
- **Seismic Display** can now display picks as 'Marks Only'. This representation is convenient for picking of bad traces.



- **Seismic Display** module can now separate individual ensembles with 'Ensemble boundaries'.
- In the seismic display window of the **Interactive QC** module, now you can define 'Persistent spectra' windows. When you switch between seismic gathers, these windows persist allowing you to always see the spectra of exactly the same fragment of each gather.



- In the seismic display window of the **Interactive QC** module, now you can filter the list of gathers to display using an arbitrary header, as well as search for a particular gather in the list.

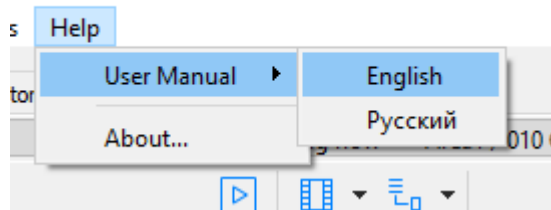


- Now **Zero-Offset DeMultiple** module, when shift model option is on, in the 'Don't subtract, output model' mode outputs the shifted model.
- Now you can separately see 'Seismic size' and 'Headers size' of each dataset on the **DB Navigator** tab.

Name	Location	Trace count	Sorted by	Seismic size, MB	Headers size, MB
for_study_RAW	Area1	2915160	FFID : CHAN	8340.3	556.0
for_study_RAW_edt	Area1	2904220	FFID : CHAN : ...	8309.0	822.6
for_study_RAW_edt_stat_p...	Area1	854544	FFID : R_LINE :...	815.0	229.0
for_study_RAW_edt_prepr...	Area1	854544	CDP : OFFSET	815.0	229.0
stack0	Area1	41242	CDP : OFFSET	39.3	11.2

- New **Clone Traces** module replicate input traces specified number of times.
- A new option is added to the **Trace Math** module – 'Replace Amplitude by Scalar'

- In **SEG-D Input** and **SEG-D Input (rev. 3)** modules, now you can remap numerical strings of more than 9 characters (i.e. 10C or 13C are now allowed).
- Now you can open **User Manual** directly from the **Help** menu of the main window.



- Some issues were fixed:
 - Shift model option in the Zero-Offset DeMultiple does not affect the result -- **FIXED!**
 - Rename dialog for Areas/Lines/Flows allows using of illegal symbols resulting in the crash of the software - **FIXED!**
 - After a flow is renamed, old log files are lost - **FIXED!**
 - SEG-D Input fails to read files of more than 300 Mb - **FIXED!**
 - 'After testing "Custom Impulse Trace Transforms" using a specific time window to perform deconvolution, we noticed that it seems that deconvolution based on specific time windows does not work if the time window is larger than a certain value' - **FIXED!**
 - 3D Regularization moves the grid - **FIXED!**
 - Artefact due to a non-existing zero-amplitude sample at the end of each trace in the QC Viewer module (really annoying when using it for maps) - **FIXED!**
 - Amplitude Correction -> AGC does not work with replicas - **FIXED!**
 - Easy Refraction fails to load tab-separated pal-files - **FIXED!**

As always, if you are on maintenance, please contact us at support@radexpro.com and get your free update.