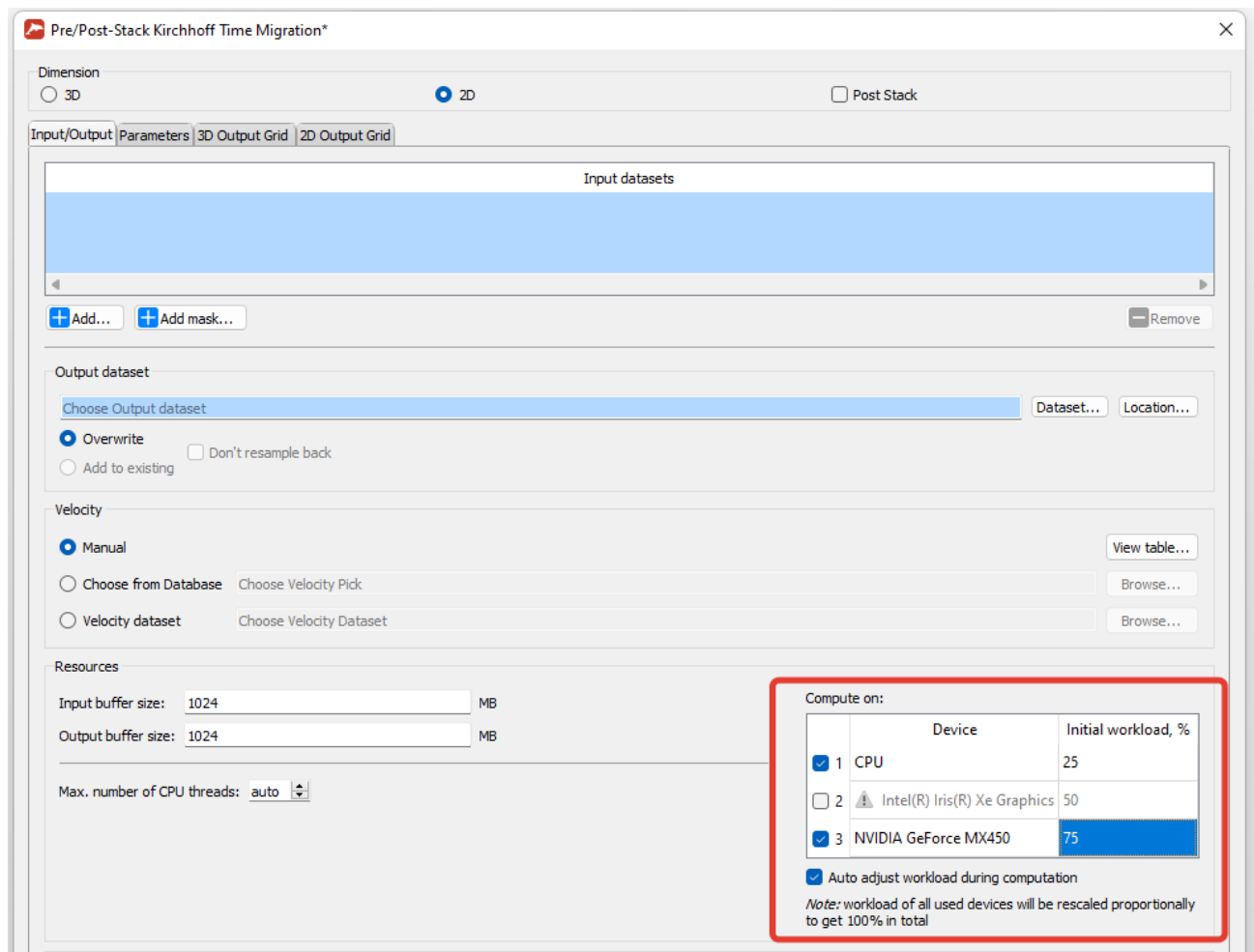


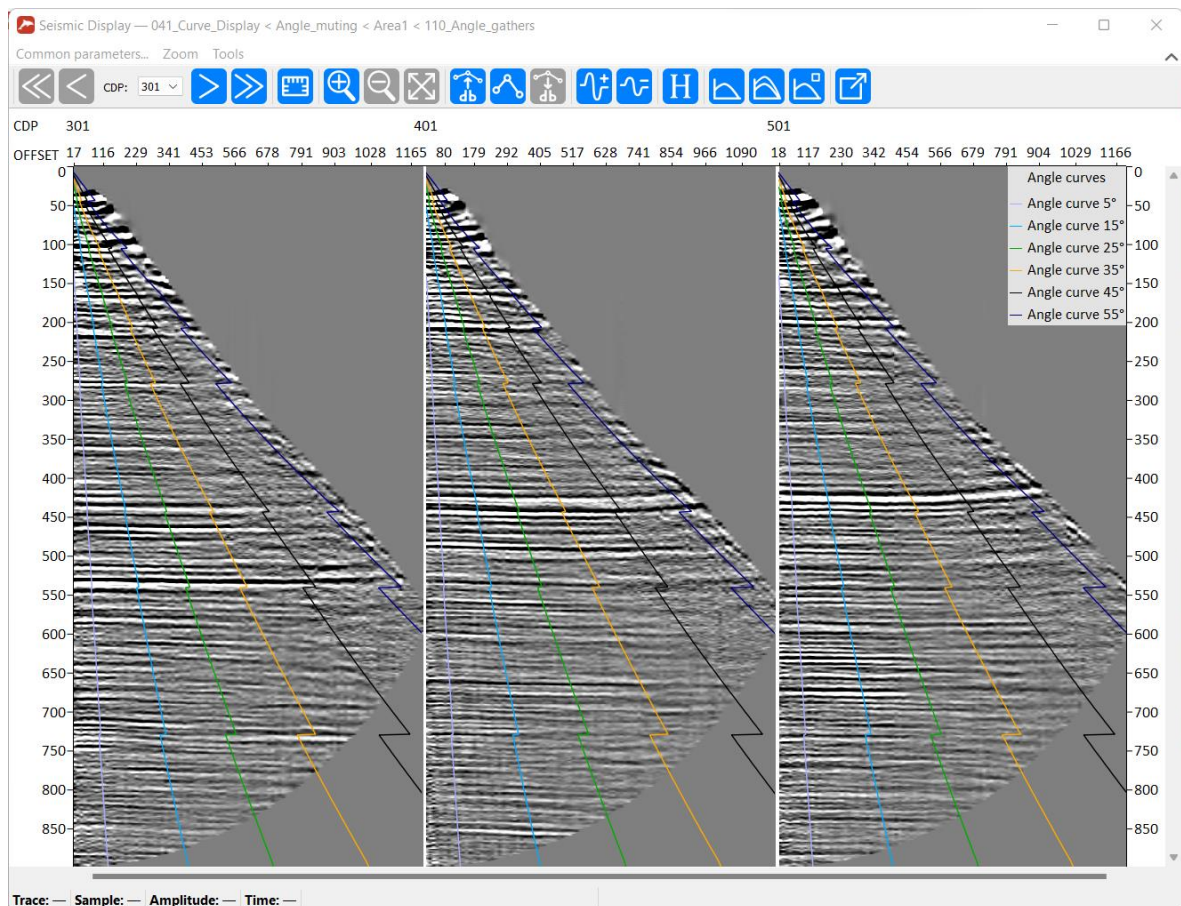
# RadExPro 2022.3 release notes

We are happy to announce our next software update – **RadExPro 2022.3**! The main novelties of this release are as following:

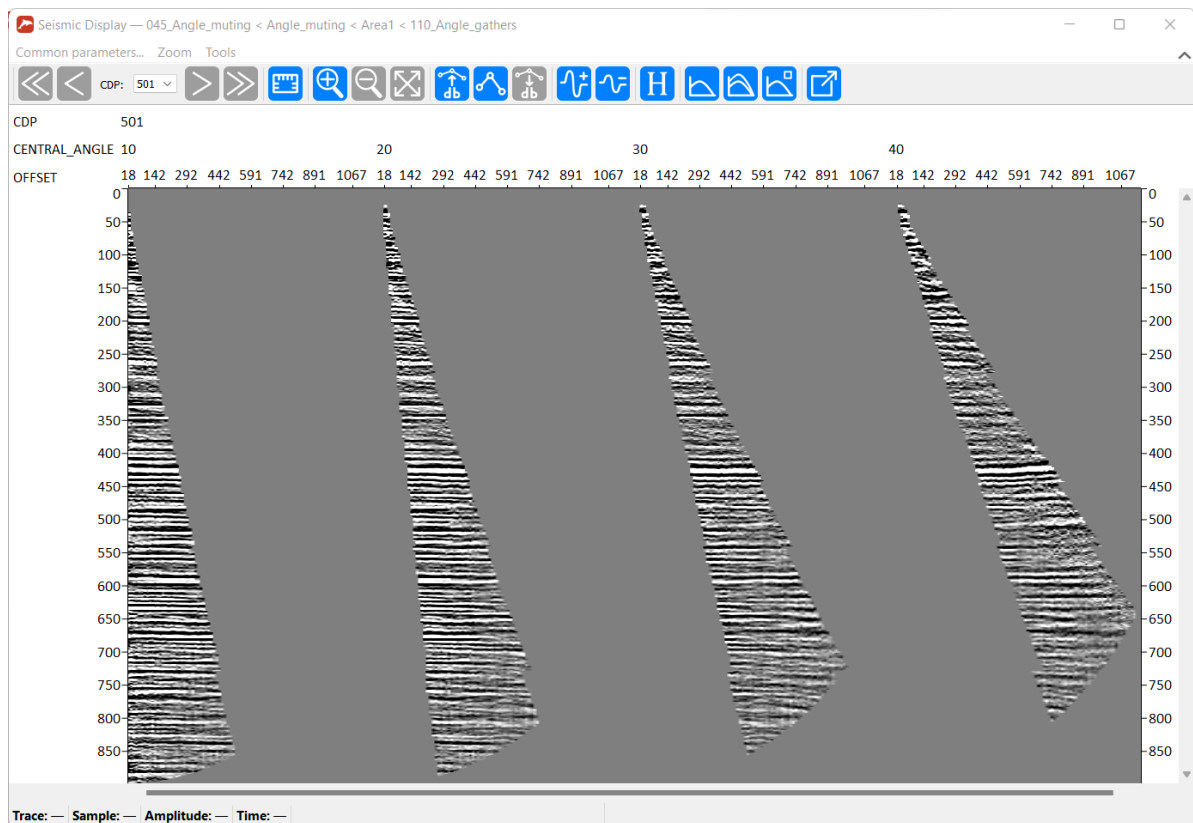
- **Pre/Post Stack Kirchhoff Migration** can now use more than one GPU for computations. Moreover, now you can indicate desired workload of the CPU and each individual GPU manually.



- New **Angle Muting** module allows separating the data of the input CMP gathers by common angle of incidence for further analysis. Angles of incidence are calculated based on input interval velocity model. You can either create central *angle curves*, save them to the database and then display in the **Seismic Display** module, or actually mute the data within the specified angle ranges and output muted *angle gathers*.

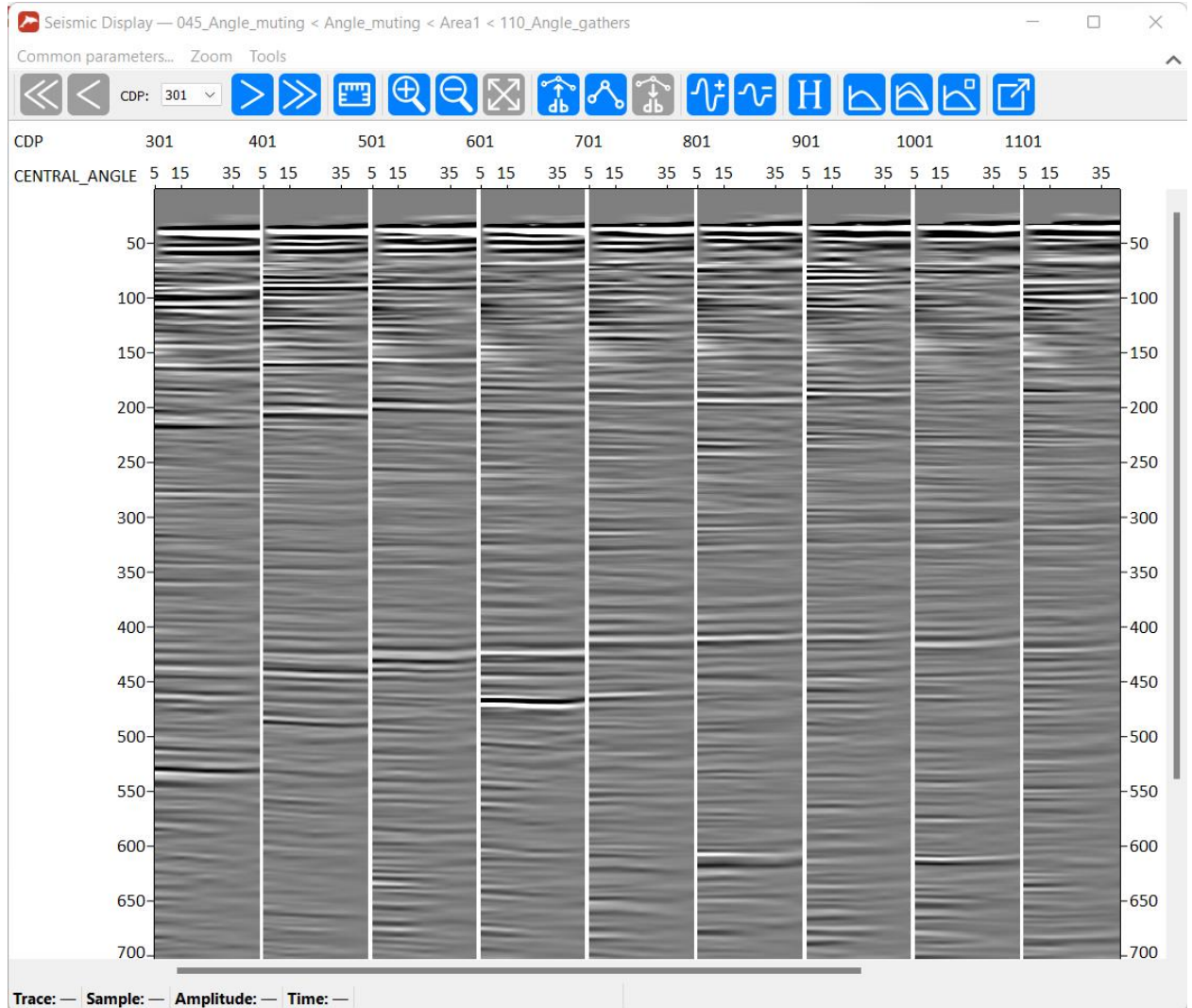


*Angles curves (corresponding to central angles of incidence) displayed over several CMP gathers in Seismic Display module*



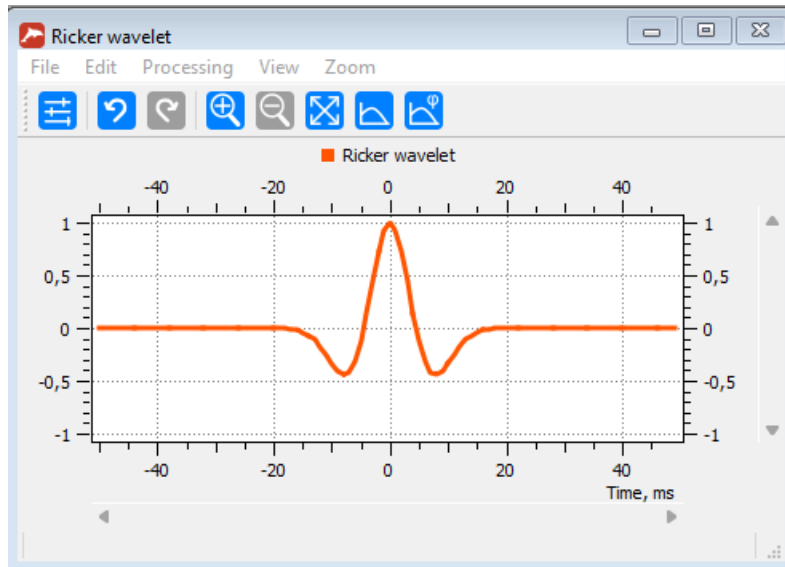
*Four muted angle gathers generated by Angle Mute module for one CMP gather*

- **New Angle Stack** module produces angle stacks. Basically, it generates angle gathers the same way as the **Angle Mute** does, but then it stacks traces of each angle gather together (with optional amplitude normalization). As a result, each output CMP gather would contain one stacked trace for each angle gather as specified in the parameters.

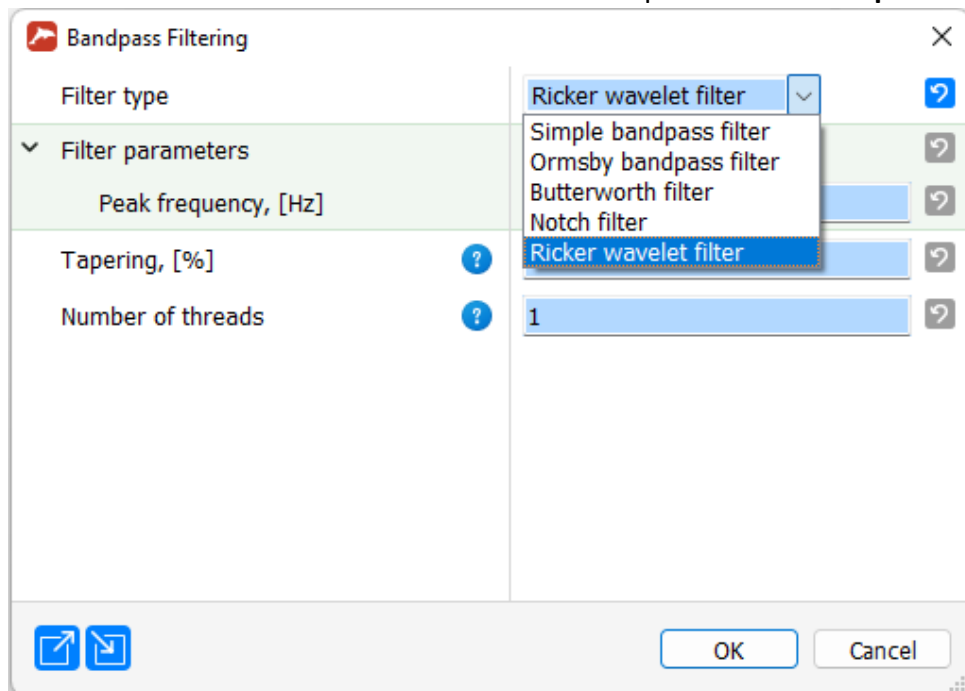


*Output CMP gathers after the Angle Stack – each trace of a CMP gather is a stack of the corresponding angle gather.*

- We have added **Ricker wavelet** generation to the **Wavelet Processor** module.



We have also added **Ricker wavelet filter** as an option to the **Bandpass Filtering** module.



- The following modules were converted to the universal parameter style, with standard export/import facility and total support of replicas:

Trace Length  
Remove AGC  
Ensemble Split  
Resample  
Time-Frequency Representation  
S-Transform

**Trace Derivative**  
**Bandpass Filtering**  
**Trim Statics**  
**Header Enumerator**  
**Linear Moveout Correction**

- The following issue was fixed:
  - SEG-Y Output is very slow when outputs through the network -- **FIXED!**

As always, if you are on maintenance, please contact us at [support@radexpro.com](mailto:support@radexpro.com) and get your free update.