



# RadExPro 2013.4

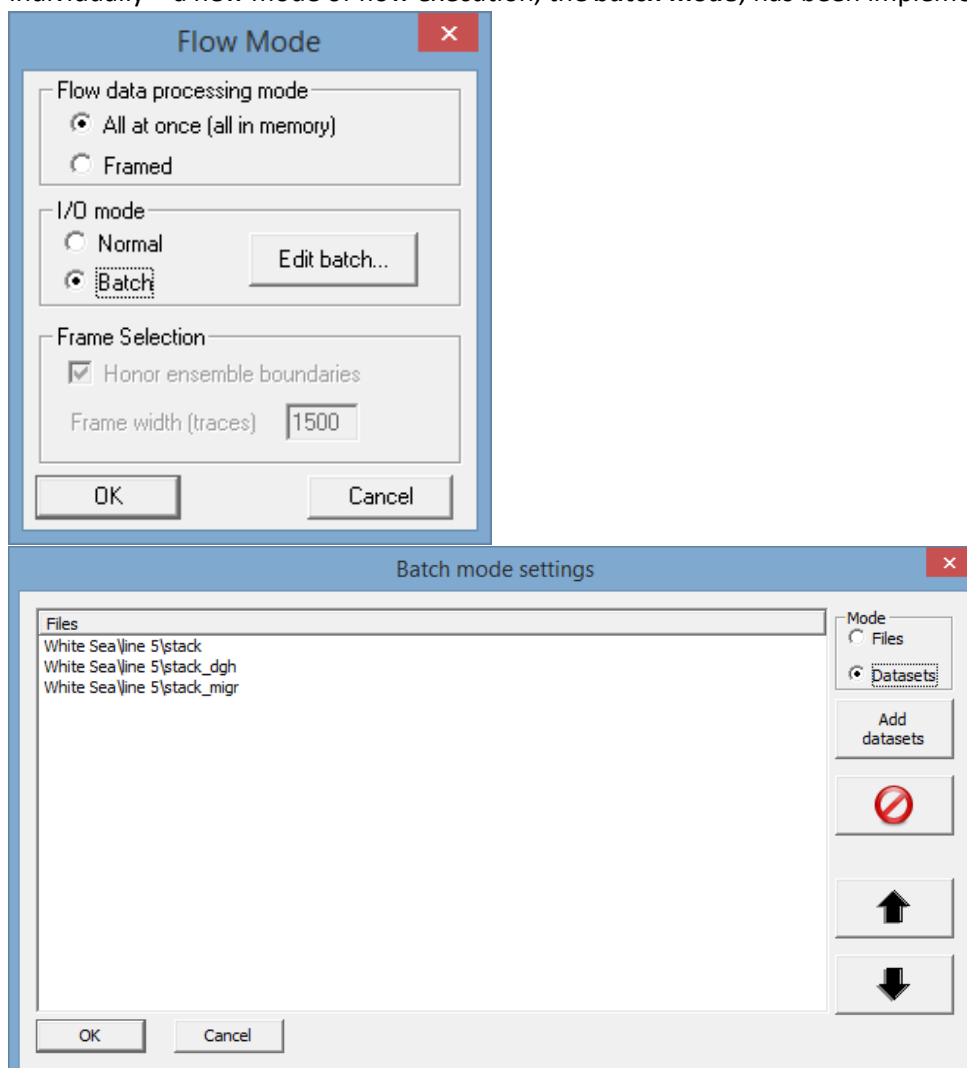
## (Holiday Edition) release notes

We wish you and your families and friends great winter holidays and most happy and fulfilling New Year!

Today we are most excited to announce the last RadExPro release of the year 2013 – the **RadExPro 2013.4 (Holiday Edition)**.

This time the main upgrades are as following:

- Now you can easily process a number of files/datasets in one flow and output them individually – a new mode of flow execution, the **batch mode**, has been implemented.

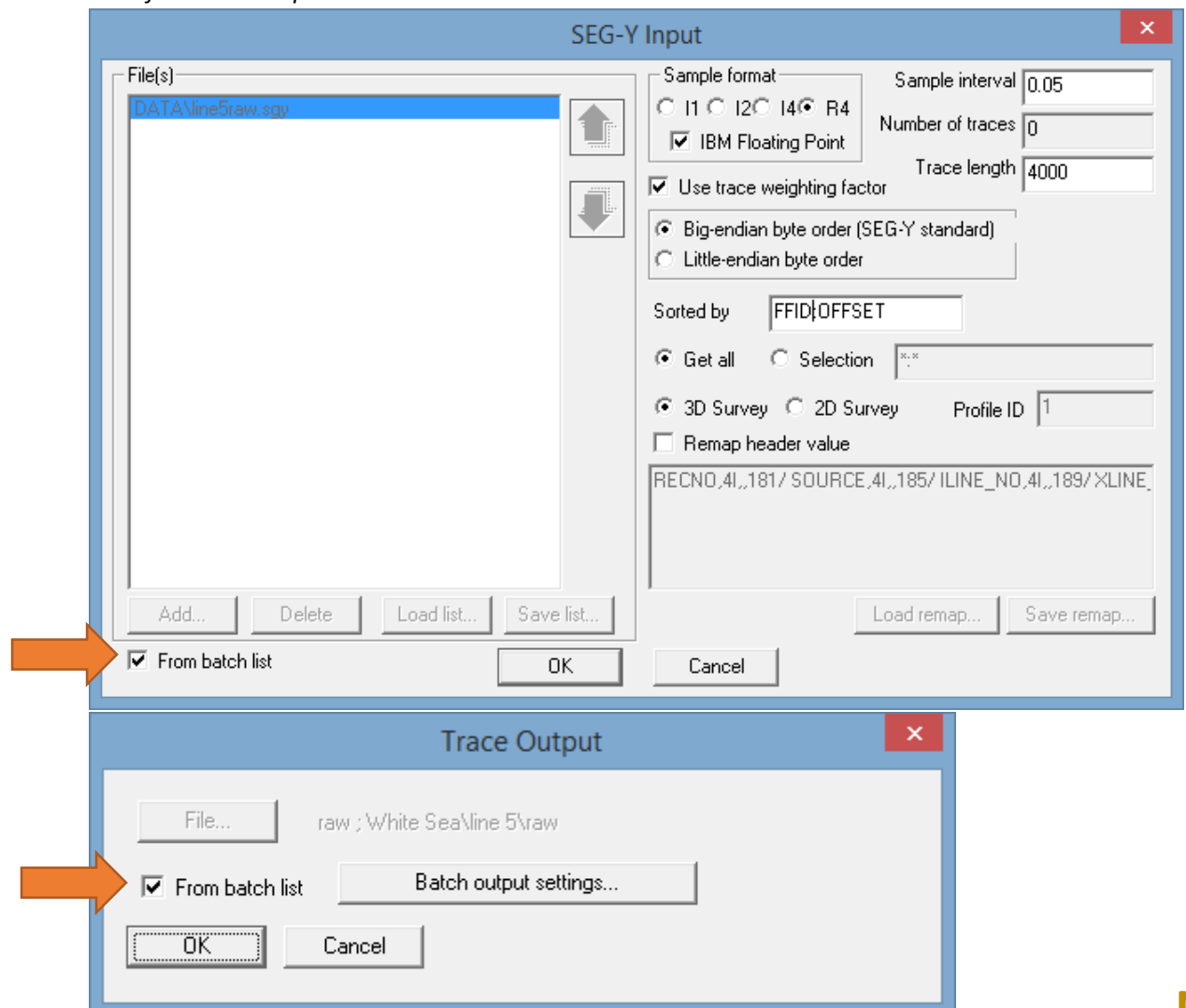


In the batch mode, an input module takes input files/datasets from the *batch list* one by one and pass each of them sequentially through one and the same flow. At the output, an output routine saves the processing result for each input file/dataset separately.

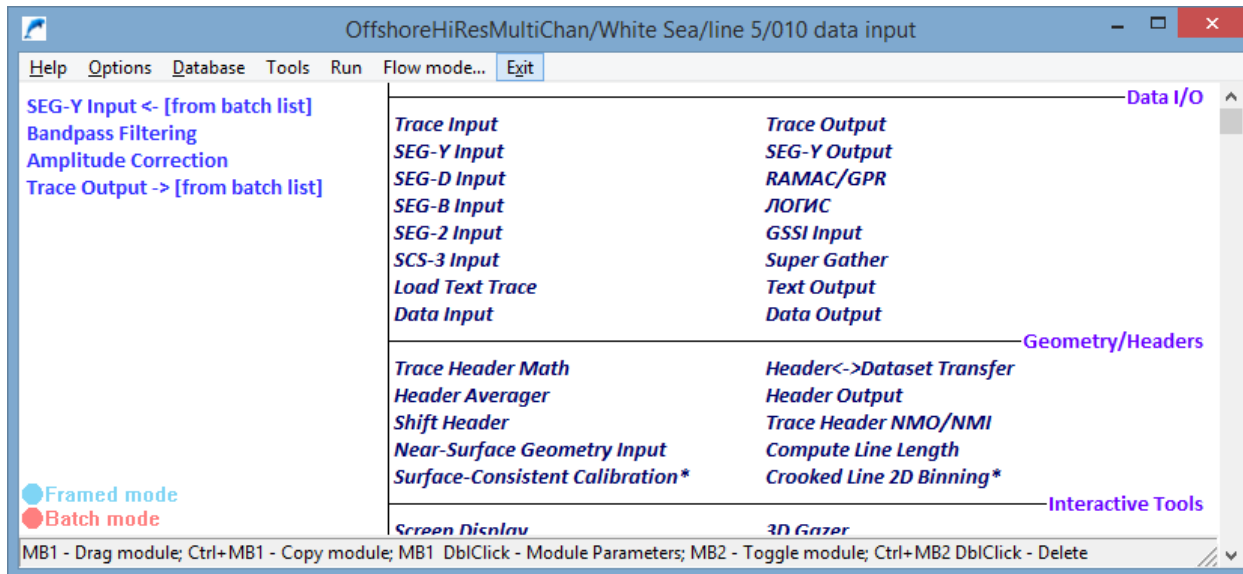
For the moment, the following i/o and stand-alone modules support the batch mode:

- **Input:**  
Files: **SEG-Y Input, SEG-D Input, SEG-2 Input**  
Datasets: **Trace Input**
- **Output:**  
Files: **SEG-Y Output**  
Datasets: **Trace Output**
- **Stand-alone:**  
**Marine Geometry Input**

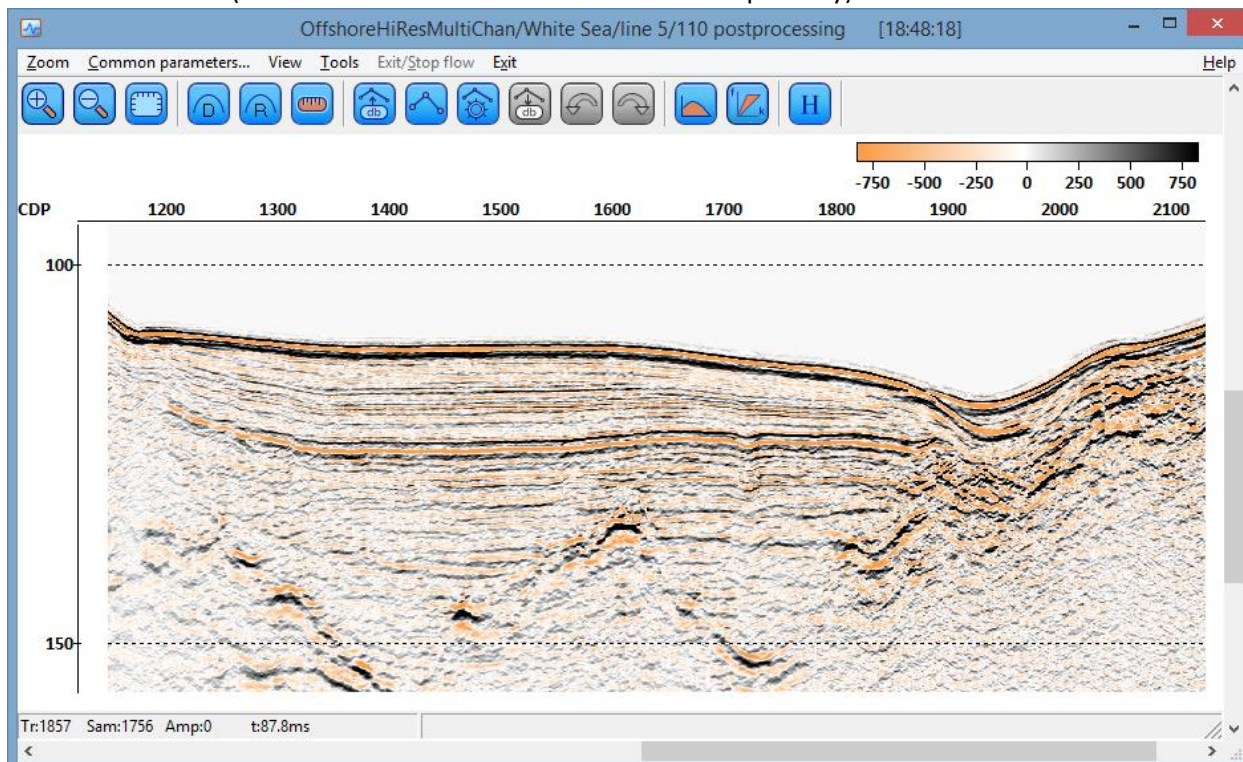
**NOTE:** To run a flow in the batch mode, you need to (1) in the Flow Mode dialog set the I/O mode to Batch, (2) click the Edit batch button to populate the batch list with files or datasets, and (3) **set each of the i/o routines in the flow to take its file/dataset name from the 'batch list' rather than from its own parameters.**



For big input datasets, the batch mode can be combined with the framed mode. To ensure that you do not get lost, we have added flow mode indicators signaling the currently selected modes at the bottom left of the flow editor window:

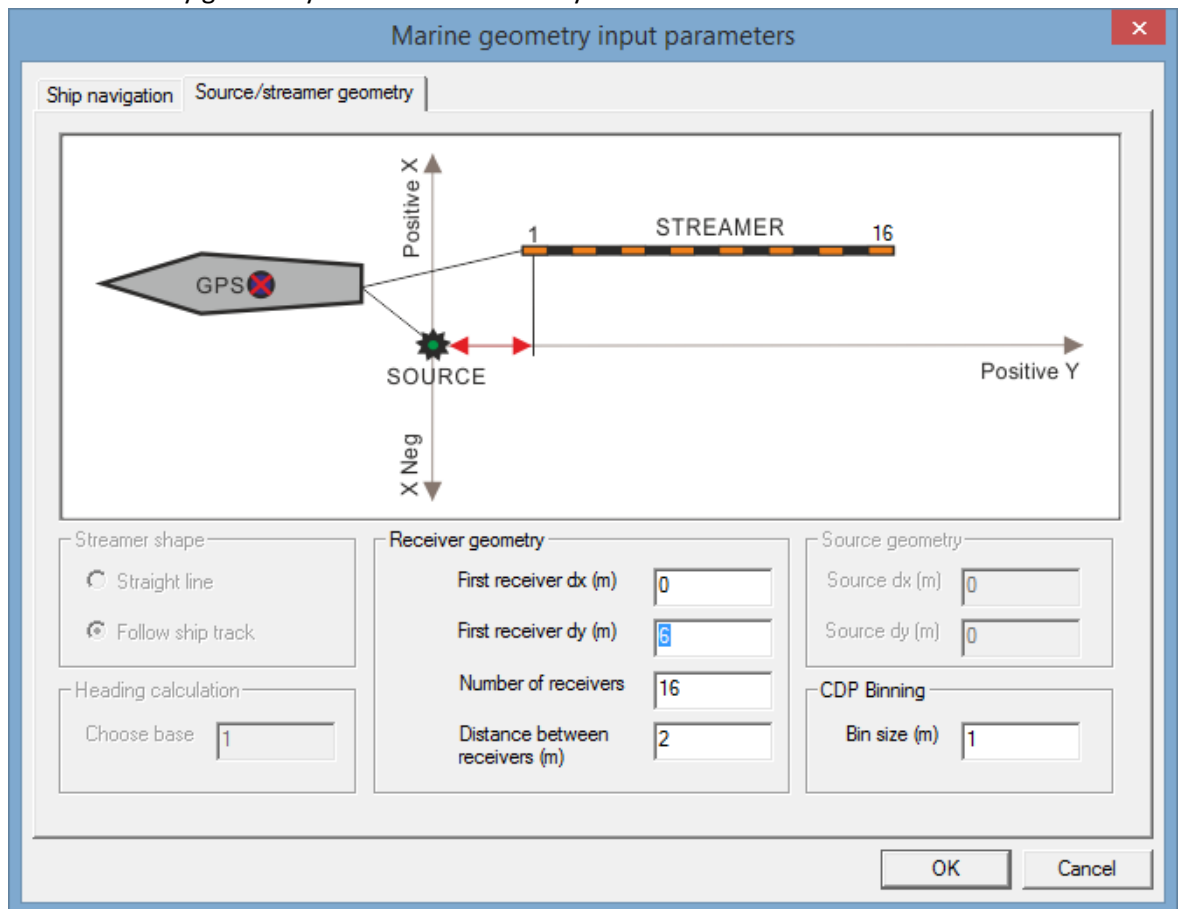


- We have added amplitude labeling to the palette bar of the **Screen Display** module. The amplitudes are now labeled for any variable density display except when the Normalizing factor is set to Individual (i.e. each trace is scaled and color-coded separately).

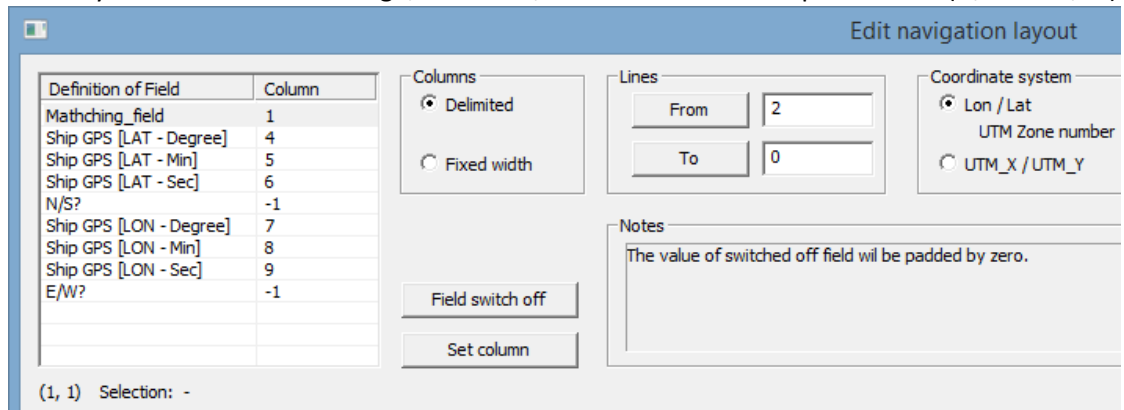


- In the improved **Marine Geometry Input** module, we have changed the way in which 'dummy geometry' (when positioning is calculated along the line based on the system geometry only) parameters are set. The previous way was considered by many users as pretty confusing, so we are happy to say that we have addressed the issue and added a dedicated interactive scheme

for the 'dummy geometry' mode to make it fully intuitive:

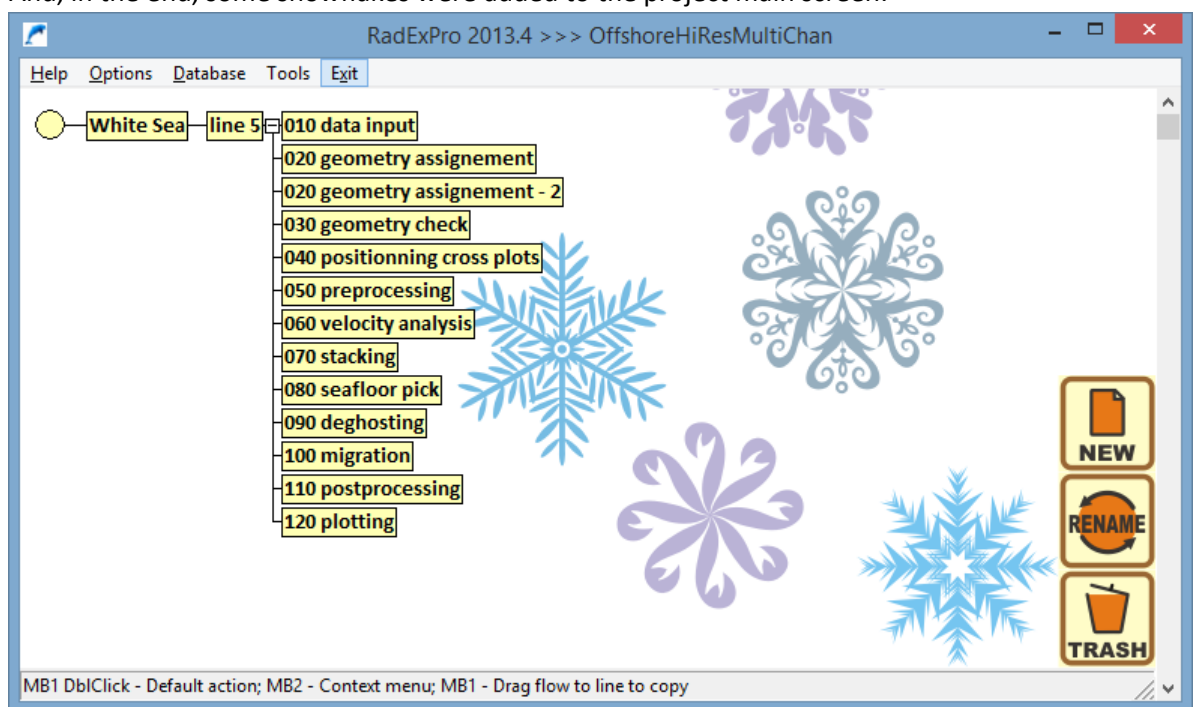


In the 'Real ship coordinates' mode, the module can now identify the appropriate hemisphere not only from the coordinate sign, as before, but also from literal specification (N/S and E/W):



- When using AGC option of the **Amplitude Correction** module, now you can save applied AGC coefficients to a separate dataset. Then these coefficients can be analysed, or removed from the data by a dedicated new **AGC Removal** module. This makes it possible to perform some processing that requires uniform amplitudes after the AGC is applied, and then, when finished, remove the AGC from the processing result to restore the original amplitude levels.

- Tapering between processing windows was added to the **Zero-Offset Demultiple** module, to make multi-window processing results smoother and eliminate artifacts at the window edges.
- A bug in the **2D Spatial Filtering** module that made it crashing when the Alpha-Trimmed Mean Filter was run in the subtraction mode has been fixed.
- An issue preventing **TFD Noise Attenuation** from operation on stack data unless the whole stack was artificially marked as one ensemble was fixed.
- And, in the end, some snowflakes were added to the project main screen:



As usual, we encourage our customers with active maintenance to contact us at [support@radexpro.ru](mailto:support@radexpro.ru) and receive the update for free.

Please, note that on 31 December – 8 January our office will be closed for the Russian New Year and Orthodox Christmas holiday.