

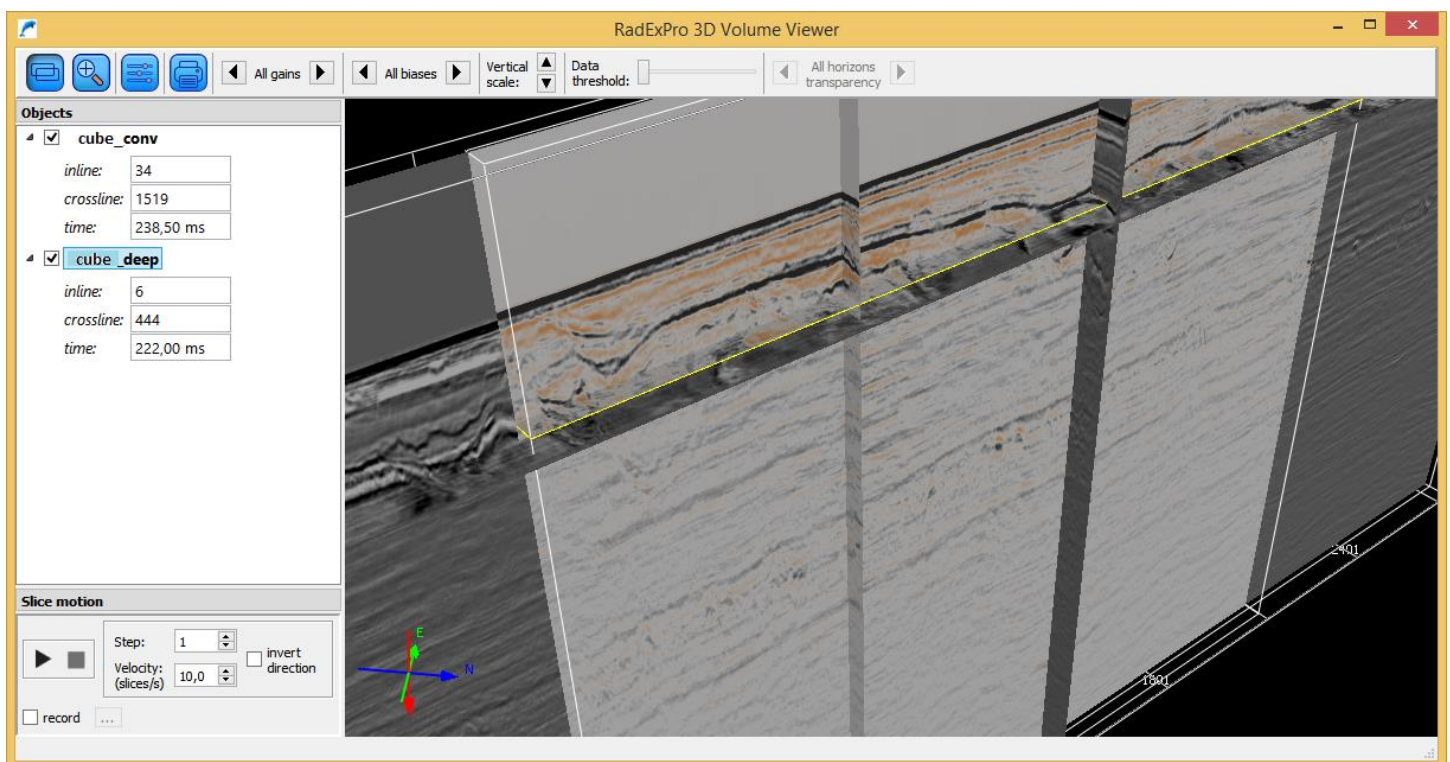
# RadExPro 2015.1 release notes

Welcome the first release of the year 2015!

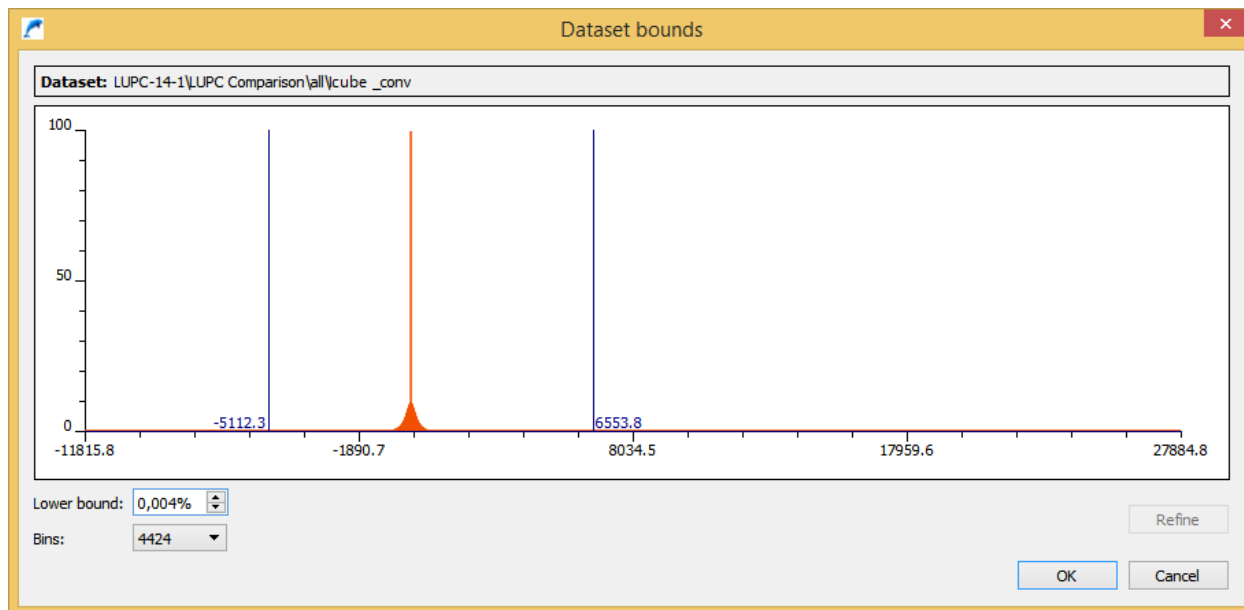
Main improvements are as following:

- The **3D Volume Viewer** module has been significantly upgraded:

Now you can load several cubes plus a set (or several) of 2D lines into the viewer and analyze all of them at the same time! This is an extremely convenient option when you need to compare different processing of the same data volume, or different cubes that overlap plus may be some old 2D data from the same area. Each of the cubes (and each set of lines) can be displayed with its own color palette, gain and bias.



Now, when loading the data into the module you check the histogram of the amplitude values and, if needed, can limit the dynamic range to be displayed. A couple of very high-amplitude bursts will not make the rest of the data pale, not anymore.



Additionally, you can load horizons (either from database picks or from headers) to the display and observe them as either surfaces (possibly semitransparent) or wires.

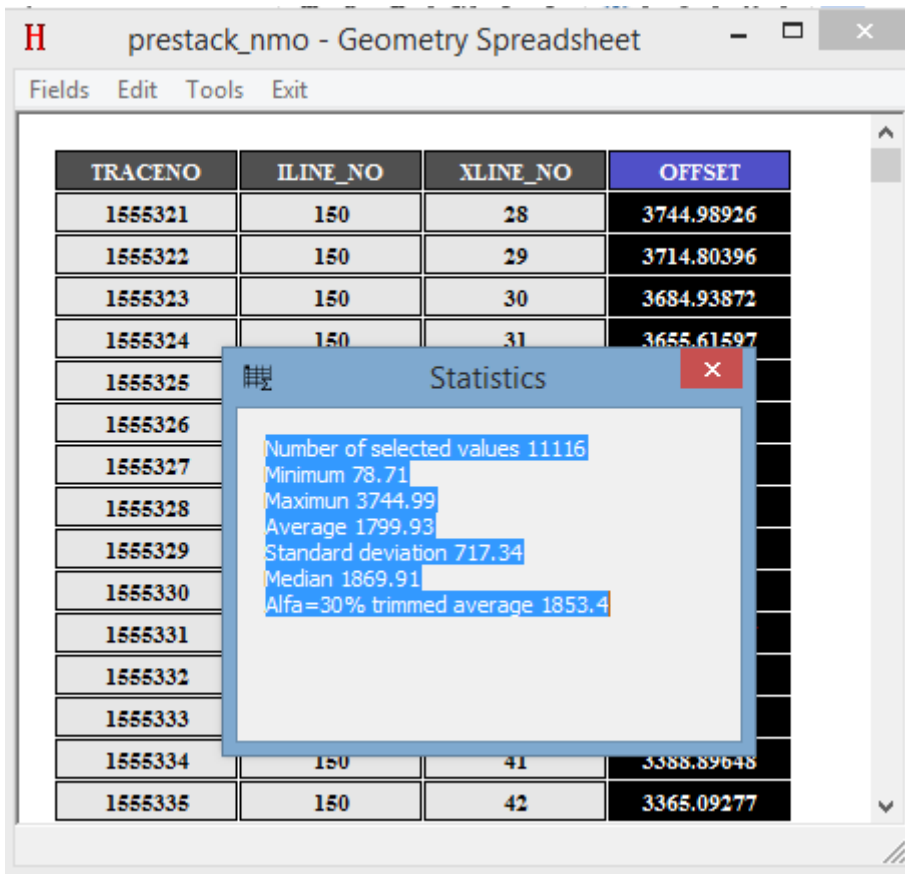
Need to make a short video for a presentation? No problem! You set up slice moving step and velocity (in slices per second), click on one of slices to be moved (in-line, cross-line or time-slice) and start recording. You can switch from one slice to another (e.g. from inline slice to time-slice) during the recording, rotate the cube and even change display parameters – everything will be recorded into the movie.

Finally, the new **3D Volume Viewer** supports multi-touch zoom/unzoom gestures, which you can enjoy on brand-new touch-screen devices.

- **Project database now backs up automatically** every few minutes. If the software terminates abnormally, next time when the project is reopened you will be asked if you like to restore the project database from the latest auto-backup file. Before answering, you can browse through the project and check it for consistency.
- Wondering what is the easiest way to make an adjustable survey map in RadExPro? **CrossPlot** module now can plot header values of several datasets at the same plots. Simply use multiselect when selecting input datasets. Yes, making a survey map, or adding a new line to an existing SNR plot is now that easy.
- Need to print out 150 profiles with exactly the same parameters? Ok, the **Plotting** module now supports batch mode. Just add all your datasets into a batch, in the Plotting parameter dialog switch on "Take from the batch list" check box, run the flow and... make sure that your plotter has got enough paper in the roll!

- **Ensemble QC Compute** module in addition to all pre-existing functionality can now estimate peak frequency and bandwidth (either at a level of N% or -N dB of peak amplitude or as an area below the spectrum curve divided by maximum amplitude in the spectrum):

- Now, in the **Geometry Spreadsheet** you can check statistics of the selected values. These can be all values of one header word or just an arbitrary block of values.



The screenshot shows a window titled "prestack\_nmo - Geometry Spreadsheet" with a menu bar containing "Fields", "Edit", "Tools", and "Exit". The main area displays a table with four columns: TRACENO, ILINE\_NO, XLINE\_NO, and OFFSET. A "Statistics" dialog box is overlaid on the table, displaying the following statistics:

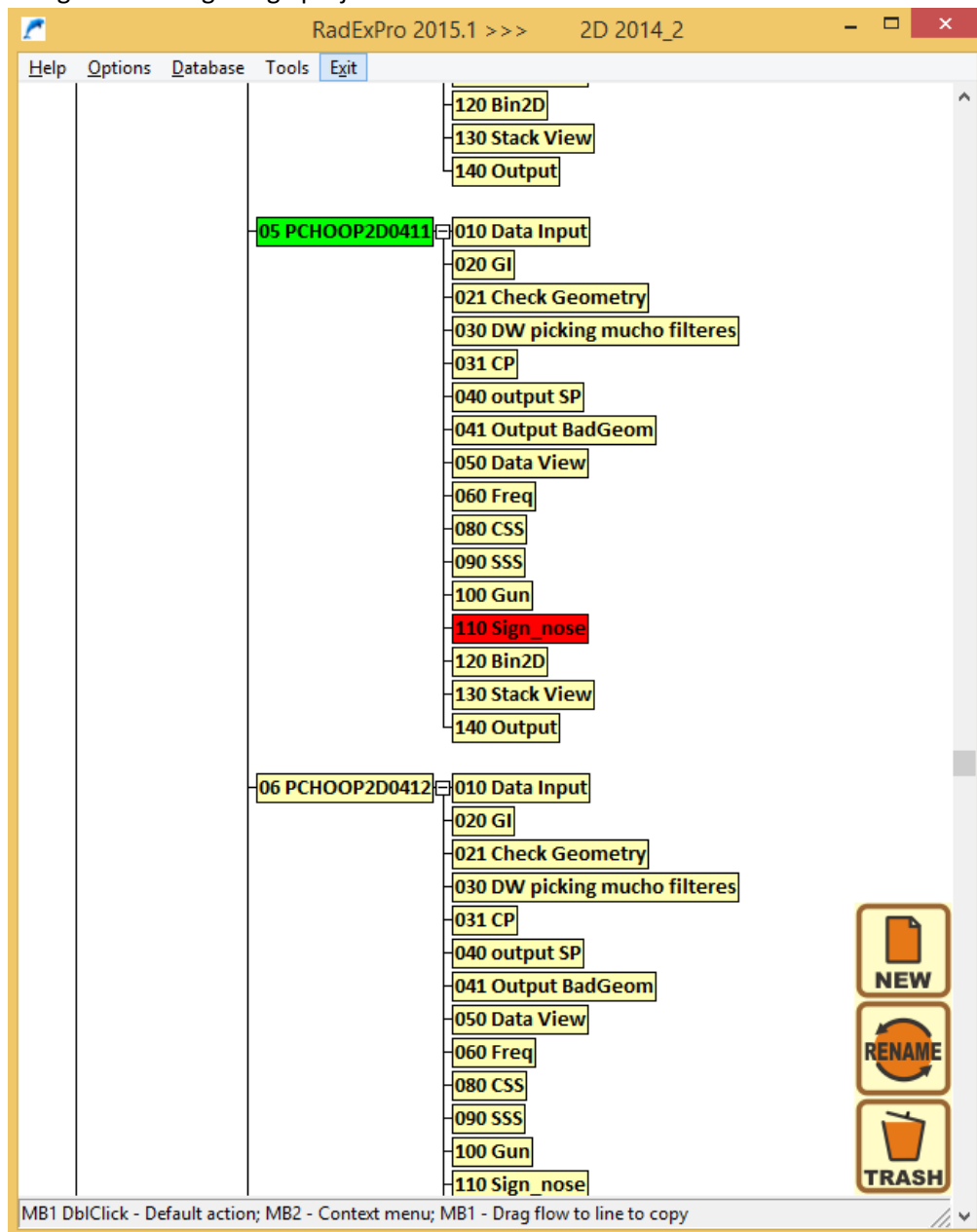
TRACENO	ILINE_NO	XLINE_NO	OFFSET
1555321	150	28	3744.98926
1555322	150	29	3714.80396
1555323	150	30	3684.93872
1555324	150	31	3655.61597
1555325			
1555326			
1555327			
1555328			
1555329			
1555330			
1555331			
1555332			
1555333			
1555334	150	41	3388.89648
1555335	150	42	3365.09277

Statistics dialog box content:

- Number of selected values 11116
- Minimum 78.71
- Maximum 3744.99
- Average 1799.93
- Standard deviation 717.34
- Median 1869.91
- Alfa=30% trimmed average 1853.4

- **Trace Output** can now append new data to the end of an existing dataset now.
- In the **Project tree**, you can now specify an individual color for each element. Right-click on an element you want to change the color and select Color command of the context menu. It makes

navigation through large projects much easier!



- In the **Screen Display**, when there are several curves displayed in the spectrum window, now you can export any of them into ASCII – the one which is selected in the list will be exported.
- Several bugs were fixed. Among them: Screen Display now cleans up all its \*.tmp files on exit (they are now created in a special TMP subfolder inside the project folder), scrolling through ensembles in Screen Display can now be used without framed mode, in Trace Editing module, top-muting does not crash anymore at negative pick values, MaxPower autostatics instability in 3D mode was fixed, and few others.

As usual, if you are on the maintenance, please contact us at [support@radexpro.ru](mailto:support@radexpro.ru) and get your update for free.

Please, note that our office will be closed for national holidays on May 1-4 and May 9-11.