

RadExPro 2015.2 release notes

Here is the new release -- **RadExPro 2015.2!**

First, we are happy to introduce a new configuration of the RadExPro software:

RadExPro REAL-TIME provides a **real-time QC of marine seismic operations, either 3D or 2D**. Please, see the [dedicated brochure](#) for more information.

Note, that we have a **special early bird offer** open for this configuration now – please, [contact us if you want to know the details](#).

Besides the real-time QC, the main novel of this release is **2D SRME** procedure that is now available in both Professional and Real-Time configurations of the software. The procedure consists of two main stages: prediction of multiples (SRMP) and subtraction of the predicted model from the data.

The SRMP stage involves new **2D SRME Interpolation** module, partial NMO (a new option in **NMO/NMI** module), new **2D SRME Prediction** and **2D SRME Geometry return** modules.

The model subtraction is to be performed by the **Wavefield Subtraction** module. The module has been optimized for this purpose: its performance was increased in about 2.5 times.

The whole procedure is described in a dedicated step-by-step instruction that we are prepared to send you immediately upon your request. Later on, we will incorporate it into the User Manual.

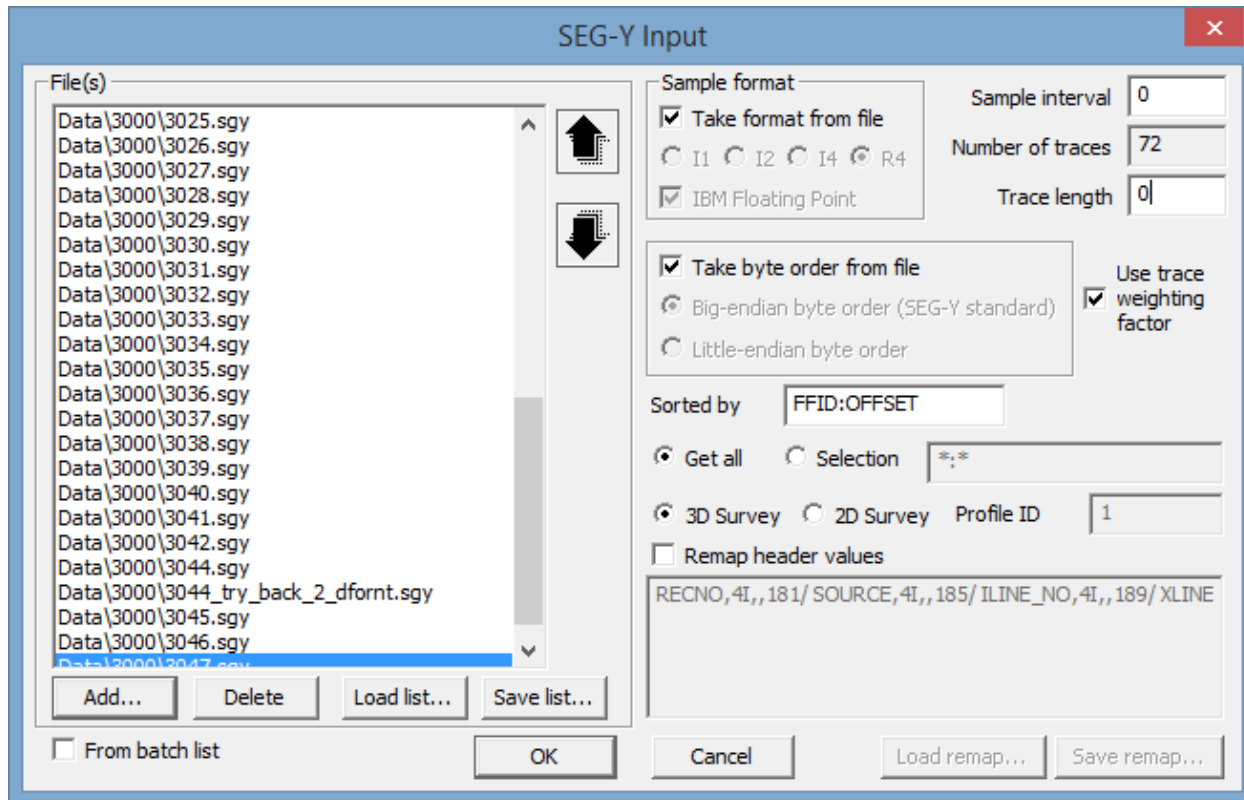
Other improvements are as following:

- **F-X Predictive Filtering** module was optimized for performance that was increased in about 5 times on single-core CPUs and in 10 times and more on multi-core CPUs with parallelization. We have also fixed a bug related to using of time windows there that was drawing stripes on the data at the edges of the windows – not anymore.
- **Autocorrelation** option of the Trace Math Transforms was speeded up in about 10 times.
- **Zero-Offset Demultiple** was speeded up in about 2.5 times.



- **SEG-Y Input** has been improved to proceed more correctly with files of different sample format, byte order and trace length. Now, when working with a list of files or in the batch mode, you can instruct the module to identify each file parameters individually from the file itself.

For sample format, you can separately switch on “Take format from file” and “Take byte order from file” options:





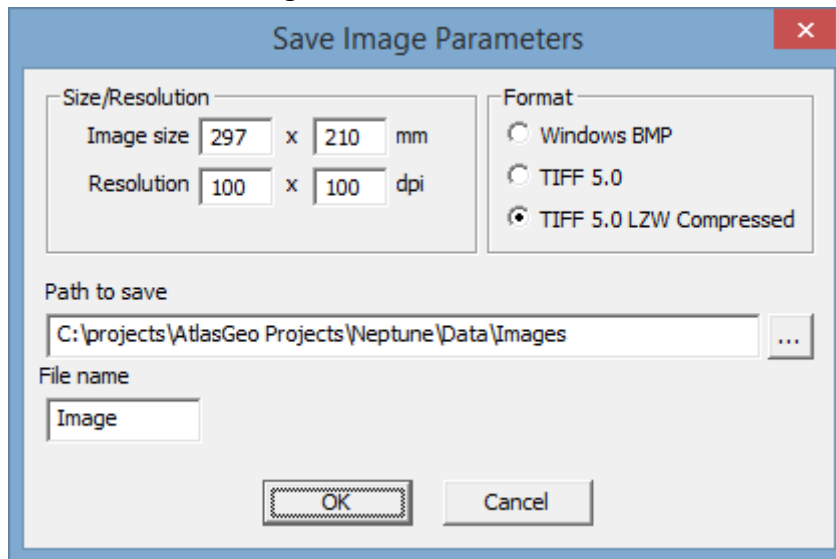
Provided that both sample interval and trace length are the same in all files in the list, this would ensure loading of files with different sample format/byte order correctly into the flow.

For the sample interval and trace length, set the appropriate edit fields to 0 to indicate that the module shall determine each of these parameters individually for each file as well. In the batch mode, this would ensure that each of the files in the batch would be correctly input to the project database with its individual DT and NUMSMP values.

However, if a number of files are loaded from the list in the module dialog (not in the batch mode), the behavior is more complex:

1. If trace length is set to 0 and is different for some of the files, the module will find the longest trace length in the list and will load all the data correctly, padding the ends of shorter traces with zeroes.
2. If sample interval is set to 0 and is actually different for some files in the list, this situation cannot be processed correctly within one flow unless the files are loaded in the batch mode. If the files are loaded altogether through the list, the shortest dt in the list will be set to all data in the flow and a warning will appear in the log file (make sure the logging is enabled in through the Options menu of the software main window).

- Into **SEG-D module**, I8 remap format option was added.
- Pan scroll was added to **CrossPlot** module. Use  buttons on the toolbar to switch between zoom and pan modes.
- Saving images behavior of the **Screen Display** module has been changed. Now, when you call 'Save image' command for the first time (through the Tools menu,  toolbar button or Ctrl+I hotkey), it will show you the parameter dialog to specify, among other things, a folder where the images are to be saved and the file name base:



Once this is done, the following calls of 'Save image' will silently save the images to the selected folder adding sequential numbers to the specified file name. Then, if you want to change the folder or/and the file name base you can do this through the 'Tools/Save image parameters...' menu entry.

- **High-resolution display mode selection** has been added. If you encounter problems with the software display on modern very high-resolution monitors or laptops (very small fonts and dialogs, very small toolbar buttons, etc.) you can now use Options/Display... menu entry of the main window to choose one of the four high-resolution display modes available, to achieve the most comfortable display of the software at your particular system. Please, do not forget to restart the software after any display mode change to see the difference.
- Both **Bandpass filtering** and **Butterworth filtering** modules were improved by top tapering that eliminates filtering artifacts related to edge effects.
- **Profile Interpolation module**: some memory issues that might lead to crashed were fixed, the module operations were speeded up.
- **Trace Math** module in Trace/Trace mode now operates correctly with frames.

17.07.2015

DECO Geophysical Software Company

www.radepro.com

- The issue with hiding and reopening dialogs were fixed in many places throughout the software.
- Some memory issues were fixed in the **STOLT3D** module.

As usual, if you are on the maintenance, please contact us at support@radepro.ru and get your update for free.