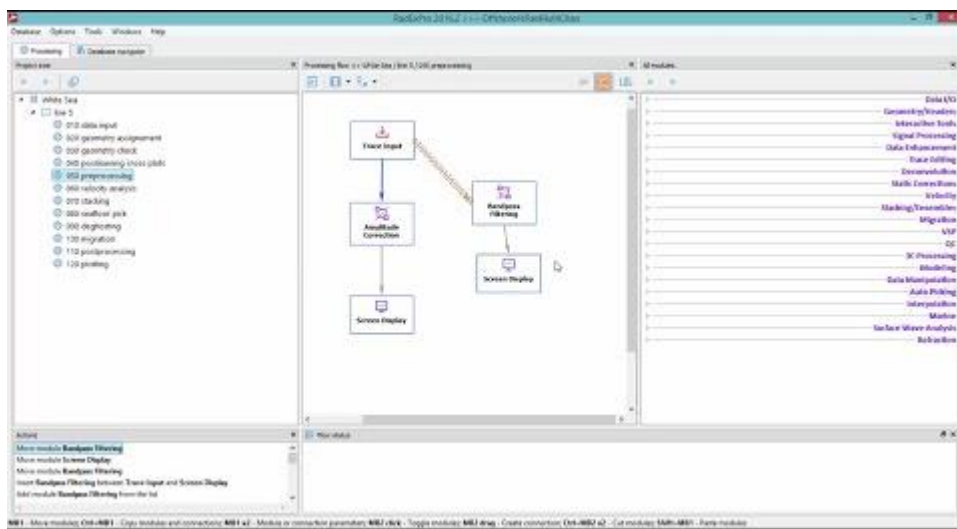


# RadExPro 2016.2 release notes

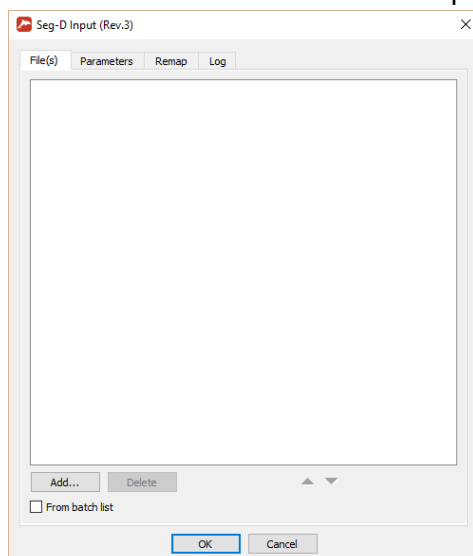
We are delighted to announce the new version of our seismic processing software – welcome to **RadExPro 2016.2** !

The main highlight of this release is the brand new main window of the software – functional, handy and intuitive. Multiselect of modules, undo/redo of every command, quick dataset preview, copying of flows, lines and areas between projects and much more: see the video below for a brief overview of the new exciting functionality.

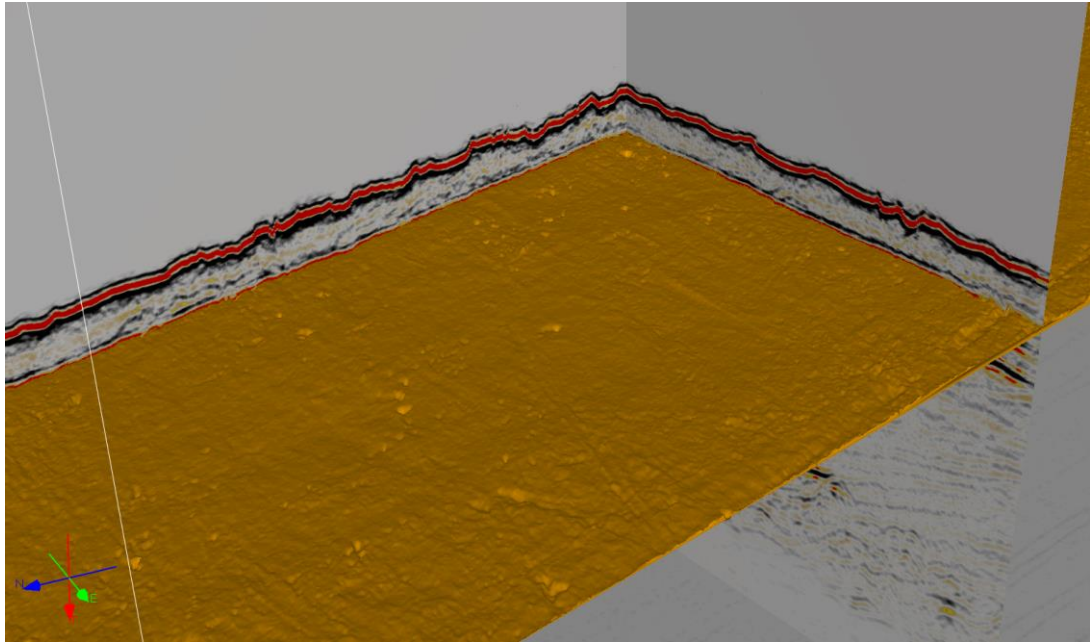


Other novelties include:

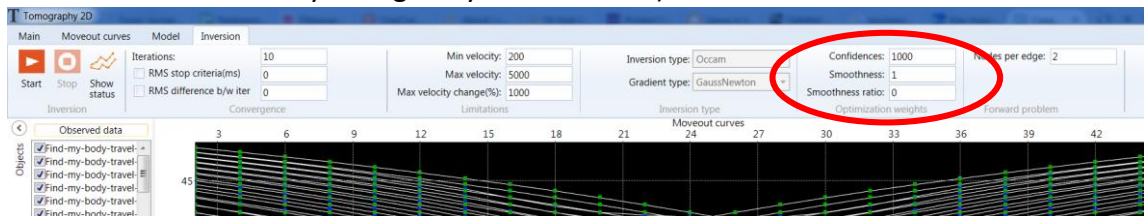
- Support of SEG-D revision 3 input data format. Use a new dedicated **SEG-D Input (Rev.3)** module to load such files into the processing flow.



- New **3D Auto-picker** module efficiently picks horizons over a 3D volume based on a sparse grid of initial seeds.



- We have added coefficient normalization to the **Travel Time Tomography** module: now setting *Confidences* and *Smoothness* to 1 on the Inversion Parameters tab ensures that their contributions to the functional being minimized are the same and equal to that of the error minimization part. (In opposite, setting *Confidences* to a very high value, as offered by default, guarantees that velocities of the model grids with confidence=1 would not be noticeably changed by the inversion).



As usual, if you are on maintenance, please contact us at [support@radexpro.ru](mailto:support@radexpro.ru) and get your update for free.