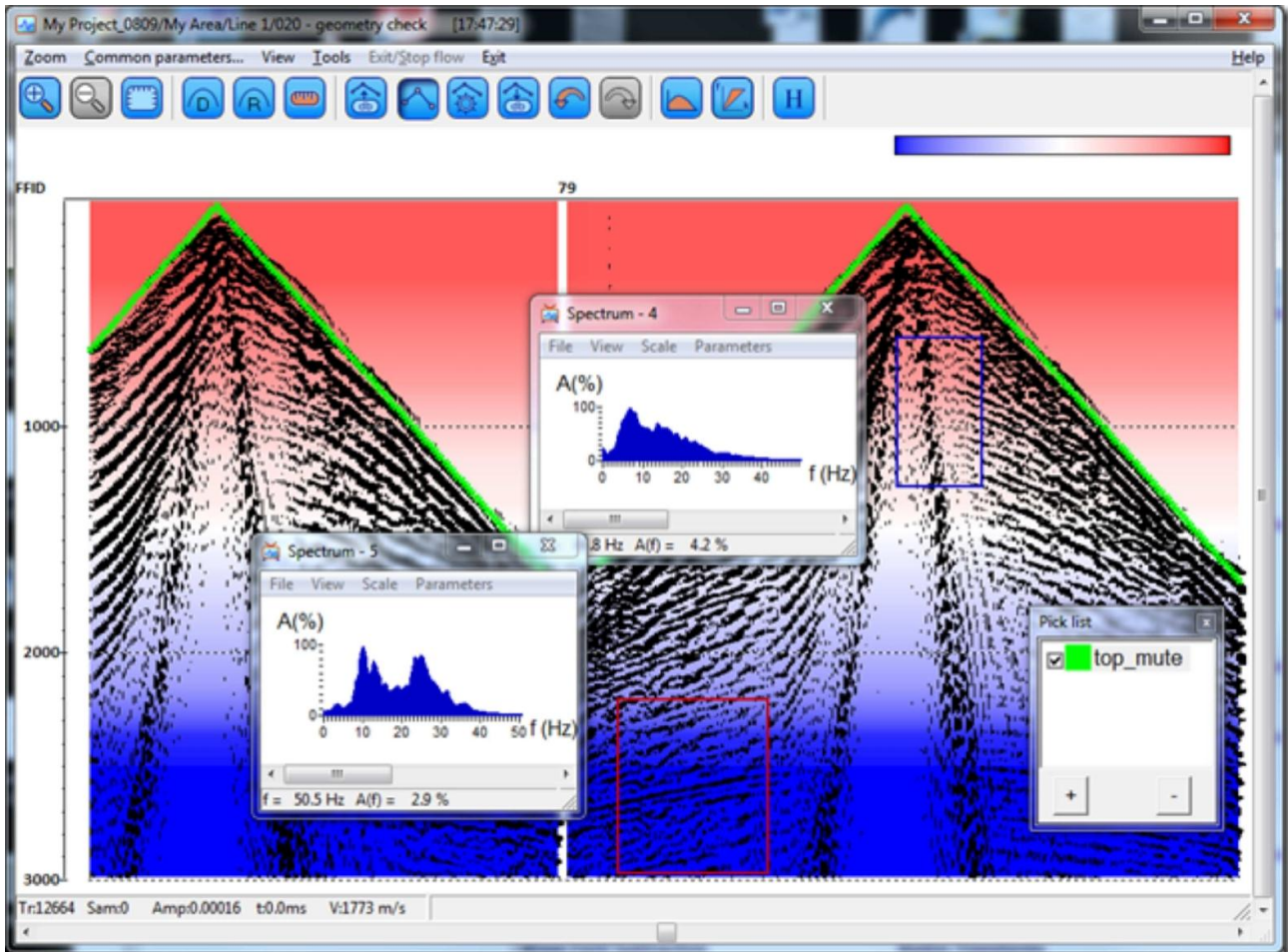


RadExPro 2012.2

We are happy to announce that the next version of our Windows-based seismic software, the **RadExPro 2012.2**, has been just released.

The main new feature of this release is the **renewed Screen Display** – a powerful interactive tool for fast data display, interactive analysis and interpretation.



The new **Screen Display** includes the following facilities:

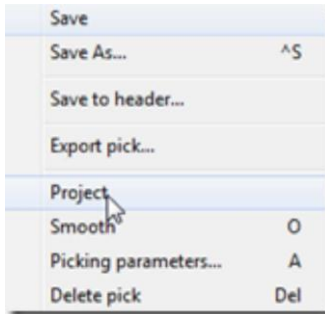
- Handy toolbar with for the most frequently used commands.
- WT/VA data display on top of the color-coded velocities or seismic traces.
- Improved auto-picking facility for more accurate picking.
- List of active picks now available in a pop-up window whenever you edit your picks. You can easily switch between the picks in the list, control their visibility and parameters.

- Clicking on a wrong position of the screen while picking is not a problem anymore with the new undo/redo facility.



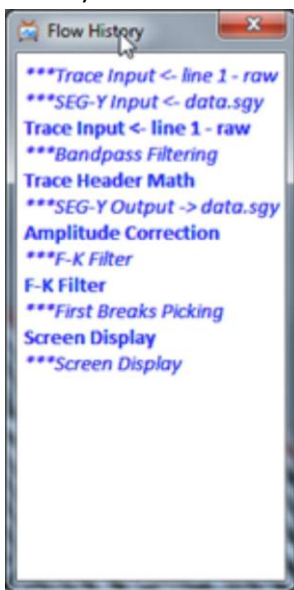
- Now you can smooth picks with smoothing average. Just right-click on the pick in the list and select Smooth in the pop-up menu (or press O key).

- If you define a horizon for top muting of pre-stack data, pick it on one single gather then and simply project to all other gathers with only 2 mouse clicks (through the pick pop-up menu).



- When a frequency of FK-spectrum is displayed, the area that was used for spectrum calculation is now marked with a rectangular. When several spectrum windows are open, the rectangular corresponding to the active window is highlighted, so you will never confuse your spectrums or forget where you took this particular one from.

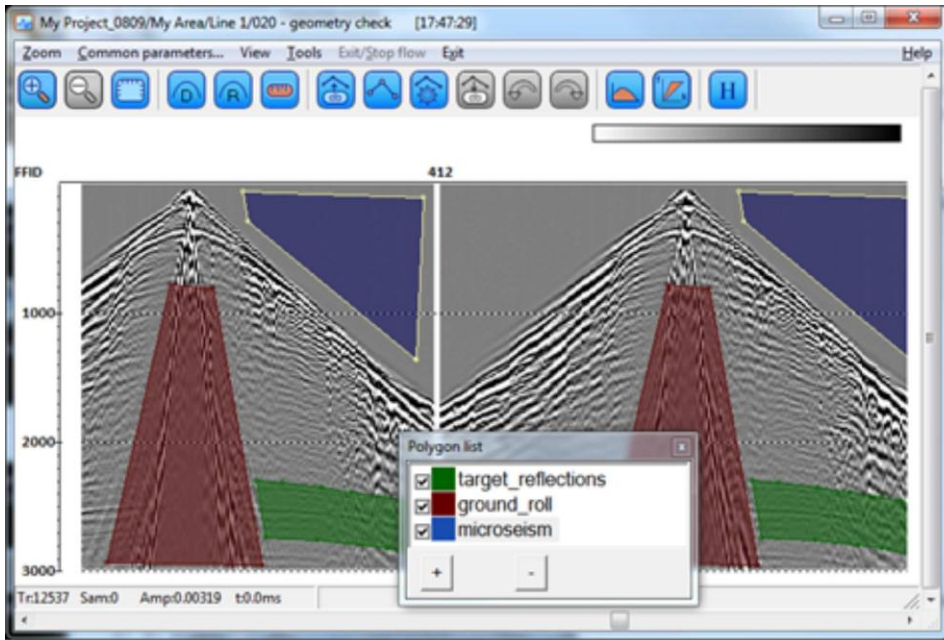
- Got lost in between of 5 Screen Display windows while testing processing parameters? Not anymore! Now you can open a Flow History pop-up window for each of them and check how exactly this particular result was achieved. (The History is available through the View/History menu).



We have also added a time stamp to the end of the Screen Display window title string for you to always know which result is from the first take, and which one from the second.



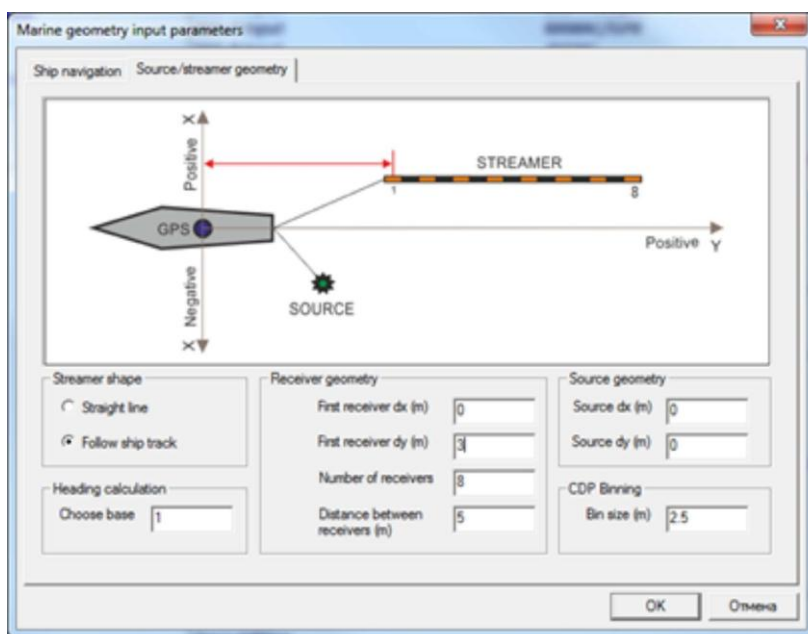
- QC polygons: create them interactively in the Screen Display and then use in the Ensemble QC Compute module for evaluation of various QC attributes.



- Improved screen normalization algorithm ensures faster display of big data volumes.

Other new functionality of the new release is as following:

- Improved **Marine Geometry Input** module allows the streamer to be considered as either a straight line parallel to the ship heading or following smoothly the ship track.



The module also allows now “dummy” geometry to be defined easily for marine QC purposes. Ship navigation can now be matched either by time (as before) or by single trace header specified (e.g. FFID). In Lat/Lon mode any of the DEGREES, MINUTES or SECONDS can have decimals or be absent.

- Improved **F-K Filter** module can use several F-K polygons at the same time. You can mirror the polygons relative to the K=0 axis to cover both positive and negative offsets at once. You can also define fan filters with optional wrapping.
- Improved **Ensemble QC Compute** module now supports polygons of arbitrary shape for attribute calculations (polygons are to be picked interactively in the Screen Display).
- Additional FK-method of dispersion imaging has been added to the improved **MASW** module. Auto-picking facility of the dispersion curves has been improved, gain control and normalization (vertical or horizontal) of dispersion images has been added.
- **SEG-D Input** module now supports FairFieldNodal version of the format.
- Some minor bugs were fixed.

We also have changed our configuration policy: since now the **RadExPro** will have only 2 standard configurations available: **Start** and **Professional**.

As usual, our customers with active maintenance period are invited to contact support@radepro.ru and receive the update for free. If you currently have the Basic configuration of the software, we will update you to the new Start configuration. All other configurations (Standard, QC, and Advanced) will be updated to the new Professional within the framework of active maintenance program for no extra charge (please, note that in some cases modification of the current licenses may be required).